

## Historic, archived document

Do not assume content reflects current scientific knowledge, policies, or practices.



62119  
*Hastings'*

**NURSERY ANNUAL**  
Winter 1943-'44



*NEW Chinese*  
**CHESTNUT**

*For the South*

*Blight-Resistant*

**Bears Nuts in 3 to 4 Years**

Be first to have them in your yard. Sensational treasure importation from China that gives us renewed Chestnut production after suffering from blight upon our native trees.

Not only will these sturdy trees produce crops of large, sweet, delicious, full-flavored Chestnuts within 3 to 4 years, but they rapidly develop into the loveliest shade trees to grace any home-grounds.

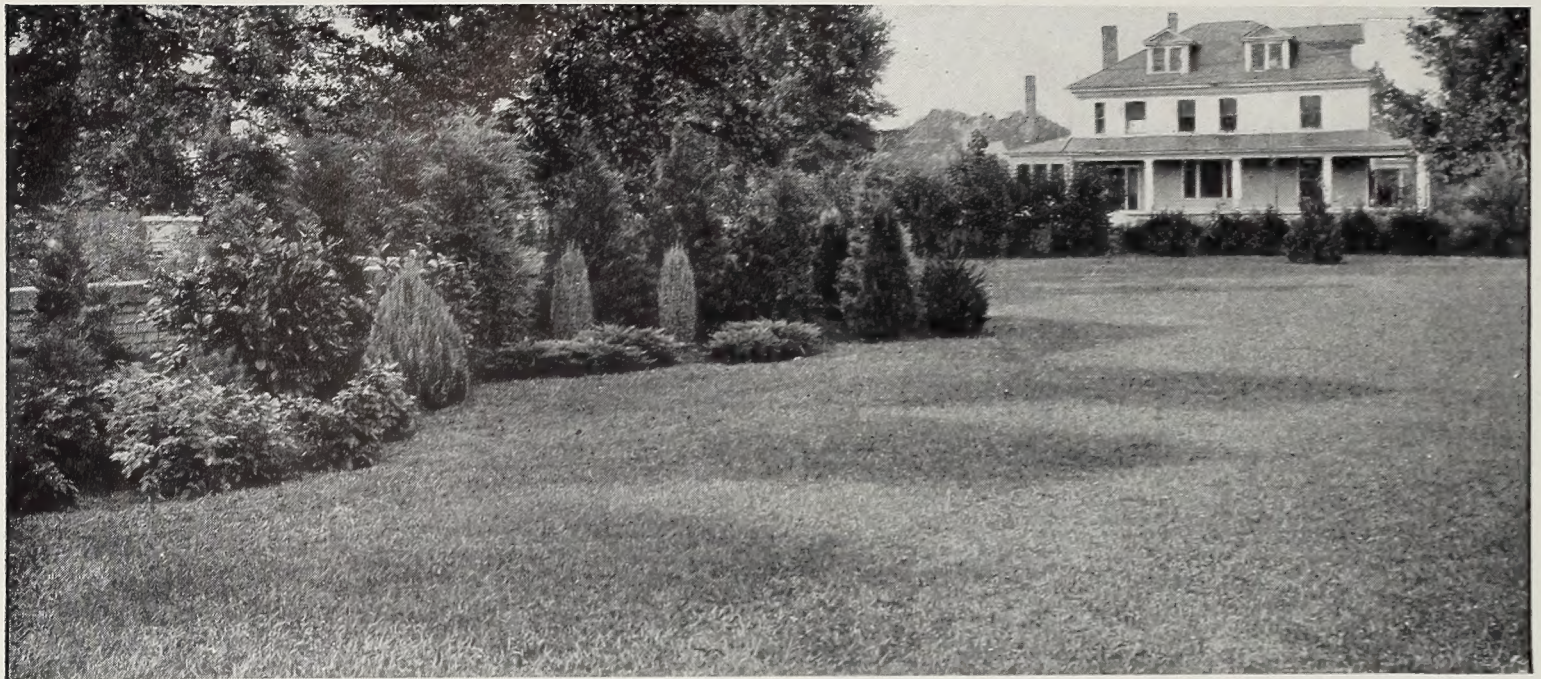
Why wait 6 to 10 years for other nuts when you can have these choicest delicacies in half the time or less? Chinese Chestnuts have been thoroughly tested and seem to thrive in almost any soil that is well drained and fully exposed to sun except, possibly, in tropical or subtropical sections. We unhesitatingly recommend them to you. Supply of trees naturally limited so send for yours promptly, please.

**Delivered.**

**Heavily rooted trees.**  
Each \$1.39; 3 for \$3.65.



**H. G. HASTINGS CO., ATLANTA (2), GEORGIA**



Hastings' special formula lawn mixture for southern climate. Obtainable only directly from Hastings

## Here's How to Have a Real Lawn in the South

### When to Plant

Our finest lawns are made during cool months. As soon as weather cools off until early spring is time to sow seed. Allow grass to become established without freezing weather if you can. Where there are trees, establish grass before or after leaves fall. Then leaves may be removed without tearing up the tender plants. Lawn grasses, except Bermuda, may be planted all fall and winter until late spring—the earlier the better. Bermuda Grass seed will start growth only in warm soil and weather. Plant it from May to August in middle South.

### Prepare Soil Well

A crop of cowpeas or other legume turned under is fine. (A heavy spreading of stable manure would be good except it always contains so many weed and coarse grass seeds that it often ruins lawns. Therefore, keep stable manure off your lawn.)

Spade or plow soil 12 in. deep. Remove rocks, roots and litter. Where shady there is frequently moss, showing acid condition. To correct this, apply 100 lbs. of Hydrated Lime per 1,000 sq. ft. and rake it in a few days before planting seed.

Grass needs food and water. For soil to hold water and food, there must be plenty of humus or vegetable matter in the soil. For poor, sandy or heavy clay soils we must haul in woods earth or rich garden top-soil or we must add humus to the soil we have. Granulated Peat Moss and Florida Humus are the best and purest forms of humus. After a good soaking, let soil settle before planting if possible.

### Seed Sowing

Five lbs. of seed will plant 1,000 sq. ft. (50x20 ft.) of lawn with most grasses. Rye Grass takes 10 lbs. Sow seed carefully so not to skip spots. After broadcasting seed, roll the seeded surface with a roller, or firm the surface in some other convenient way. Grass seed needs only to be pressed into a firm seed-bed—not covered with soil. Water well and frequently until grass is well established.

### Fertilizing

Sheep Manure and Bone Meal are well used at planting-time, being slow acting and long lasting. Use them again in spring. Vigoro and other high-grade commercial fertilizers act quickly, so spread them thinly in frequent applications in spring and summer with plenty of water to soak them in.

Apply 100 lbs. of Pulverized Sheep Manure and 100 lbs. of Bone Meal to each 1,000 sq. ft. (50x20 ft.). Rake thoroughly, mixing fertilizer with soil and level.

### Bermuda Lawns in Winter

The best summer grass in the South is Bermuda, and it should be seeded only in the summer in sunny places. Bermuda grass is brown in winter and spring, so for a year-round green lawn with Bermuda, merely scratch Sheep Manure and Bone Meal into Bermuda sod in the fall or winter and broadcast Evergreen Mixture or Winter Rye Grass over the closely mowed Bermuda sod, scratch it in with a sharp rake and roll it firmly. Do this when ground is moist or after you have soaked the ground for good planting conditions. Green grass quickly appears and lasts until spring, when Bermuda crowds out the winter grass.

### SHADY LAWN MIXTURE

For shady places in the upper half of the Cotton Belt and farther north. It makes a wonderful winter and spring grass carpet and stands hot, dry summers in shady places better than other grasses. This is our famous Evergreen Mixture with the addition of Fescue and Creeping Bent Grasses, the best grasses known for shady places.

Delivered—5 lbs., \$2.75; 10 lbs., \$5.25.

Postpaid—Ask for Special Quantity Prices

### ZOYSIA MATRELLA

**Manila Grass.** U. S. Dept. of Agric. introduction that grows equally well in shade as in sunny places. Write for pamphlet describing this new wonder grass which is grown from sod. A sq. yd. plants 400-500 sq. ft. of lawn. Express only, F. O. B. Atlanta, for shipment within 250 miles. \$5.50 per sq. yd.

### HASTINGS' EVERGREEN LAWN GRASS MIXTURE

Our finest, most satisfactory lawn grass for the upper South. It stays evergreen the year round in properly prepared soil if watered thoroughly during the summer. It grows off quickly, has a rich green color, fine texture, is slightly creeping, smooth and velvety. It really makes a luxuriant green carpet and years of experience have proved it to be the best of all lawn mixtures.

Hastings' Evergreen, 5 lbs. \$2.40; 10 lbs. \$4.50. Delivered Postpaid. Ask for Special Quantity Prices.

### HASTINGS' RYE GRASS AMERICAN-GROWN

The Winter Grass for all the South

Superior to ordinary Rye Grass seed. Our fancy seed is heavier and more plump, 99 per cent pure, full of vitality, quick to start and strong in growth. It is a fast-growing annual grass with long flat leaves, growing in tufts if left uncut. It is valuable to dairymen for winter and spring grazing, but its great use is for winter and spring lawns.

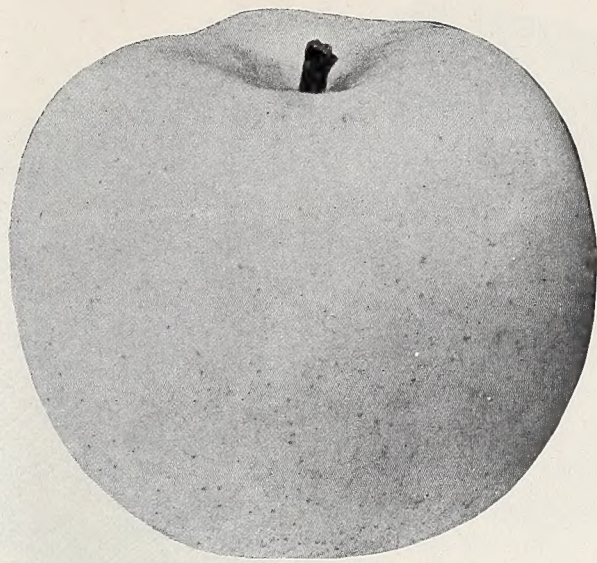
Hastings' Fancy Super Quality Rye Grass, 5 lbs. \$1.25; 10 lbs. \$2.25. Delivered Postpaid. Ask for Special Quantity Prices.

### KENTUCKY BLUE GRASS

Excellent lawn grass; ideal for golf fairways and greens; sweetest and best pasture grass. Maximum growth in spring; more effective the second year. Deep vivid green; leaf-blades narrow and plants slightly creeping. Growth is 12 in. if uncut. Fancy re-cleaned seed. Sow 5 lbs. per 1,000 sq. ft. for lawns; 40 lbs. per acre for pasture. Delivered—5 lbs., \$2.50. Prices subject to change.

### Fancy Red-Top

Herd's Grass. For lawns and winter pasture. Slightly creeping; 2 ft. in early fall. Grows on all soils but best on moist land. Stands wet weather. Sow 15 lbs. per acre. Delivered—5 lbs., \$1.50.



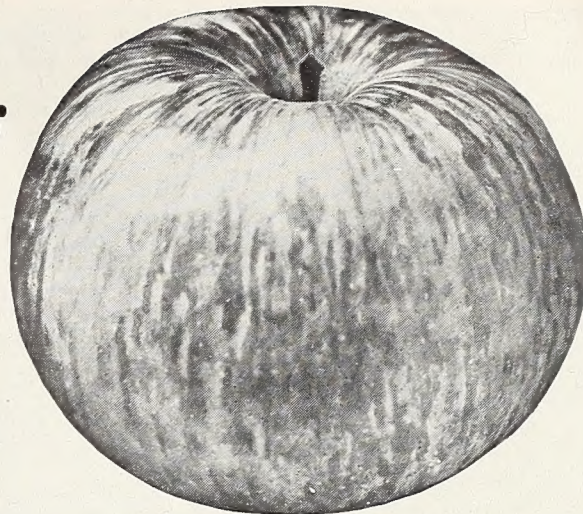
Yellow Delicious—Finest Yellow. 40c

## Grow Young-Growing Fruits

The main fruit of every orchard, except in the lower South, should be Apples. They are the most valuable and dependable fruit. Over half the Apples should be in late varieties for winter use. Plant on well-drained soils, prune systematically; cultivate and spray systematically. Plant trees 25 to 40 feet apart, depending on richness of soil.

Peaches, Plums or small fruits may be planted between trees and cut in about 12 years.

Write for our best prices on commercial orchard quantities.



Yates—Crisp, Juicy Winter Apple. 40c

### Five-in-One

## Apple Trees

5 Kinds on 1 Tree \$1.95

Five choice Apple varieties, giving you early, medium and late season pickings—all from the same tree!

Conserve space in your yard or orchard with this very interesting novelty. You obtain Red Delicious, Yellow Delicious, Yellow Transparent, Red June, and Anoka Apples—grafted upon separate branches—all on the same tree.

Different colored, different maturity, decidedly different kinds of choice Apple varieties, and just as fine as if grown on separate trees.

Strong, well-branched, 5-in-1 Apple Trees—

**\$1.95 each, 3 for \$4.95. Delivered prepaid**

### PLANT YOUR VICTORY FRUIT GARDEN WITH SOME APPLE TREES

F. O. B.—4 to 6-ft. trees: 75c each; any 3 for \$1.95; any 12 for \$6.75. Delivered—2 to 3-ft. trees: 40c each; any 3 for \$1.00; any 12 for \$2.95. All Apple varieties listed on this page included (except Crabapple).

**All-Red Delicious.** Late fall. Large, uniform, round, long, tapering with ribbed nose. Turns solid red without stripes while still hard. Flesh fine-grained, tender, firm; highly flavored juice, mild but not sweet, fragrant aroma. Wonderful flavor, appearance and stands shipment and storage. Tree hardy, vigorous, productive and widely adapted. **Prices above.**

**Yellow Delicious.** Early winter. Finest yellow Apple, with the wonderful flavor of Delicious. Best for home and most profitable for market. Medium size, round, highly flavored. Skin is clear golden yellow with few russet dots when ripe. Flesh is yellowish white, crisp and moderately juicy with a mild subacid flavor. Regular, dependable and uniform bearer. Hardy, vigorous and productive. This is the yellow Apple to plant for full satisfaction. **Prices above.**

**Early Harvest.** Early. Medium-sized, rounded, sour, yellow Apple. Smooth skin, few faint dots, bright straw color when fully ripe. Flesh white, tender, juicy, crisp, rather acid, good quality and small core. Popular for table and cooking. Productive, bears young and long lived. **Prices above.**

**Red Bird.** Earliest Red. Most beautiful and valuable early Apple. Rather large; glowing scarlet; best-quality early and very prolific. The early red to plant for home and profit. **Prices above.**

**Stayman Winesap.** Winter. Strictly high-quality Apple for the South and perhaps the most extensively grown. The heaviest bearer and with more good qualities than any other variety. Good-sized, roundish fruits with thick, tough skin of yellowish green changing to a lively deep red, splashed dark crimson. Flesh yellowish white, firm, crisp, juicy with rich, pleasing subacid flavor. Good, long keeper that always tastes good. Excellent. **Prices above.**

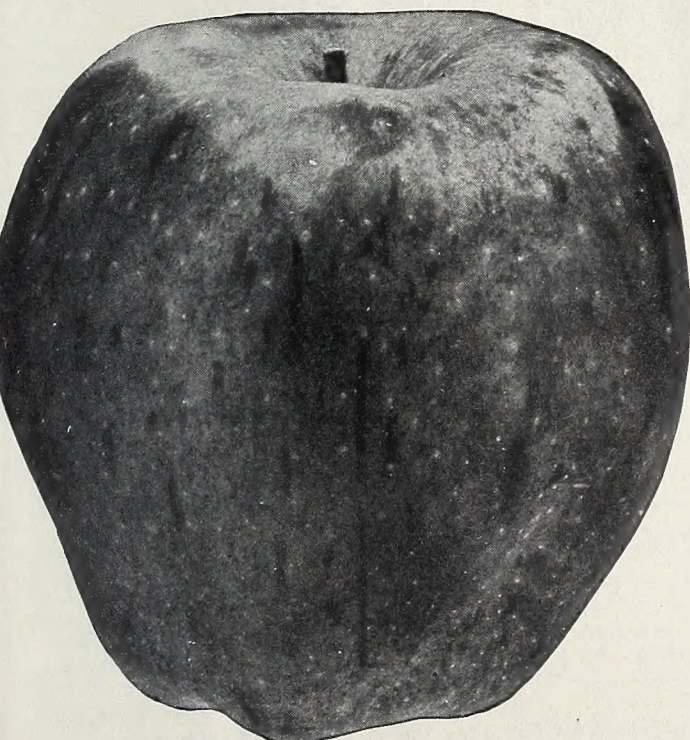
**Yates.** Winter. Small yellow fruit, dark red stripes, turns almost crimson. Not strictly commercial but has proved one of the best. Excellent home orchard variety and one of the best eating Apples. Firm, crisp, juicy and highly flavored; popular. **Prices above.**

### YELLOW HORSE APPLE

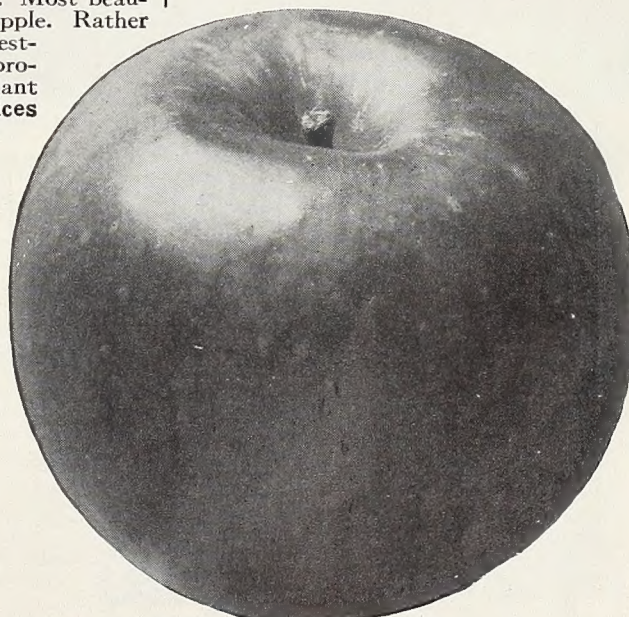
Late summer. Large, greenish yellow, firm, hard, crisp variety with acid flavor. Popular everywhere for cooking, drying, eating, for apple-sauce, baking, fried Apples. **Prices above.**

### CRABAPPLE

**Transcendent.** Late. Hardy and it yields heavily each year from early age. Large golden yellow fruit with red cheek and covered with bloom. Crisp, juicy, subacid, yellow flesh. Highly prized for cider, jelly and preserves; too as dessert fruit. Rapid, strong grower and a decorative tree as well. **Delivered—2 to 3 ft., 50c each; 3 for \$1.25; 12 for \$3.75.**



All-Red Delicious—Beautiful. 40c



Stayman Winesap—Southern Standard. 40c

# Invest in Pecans Now for Profit and Shade

**CULTURE.** Plant carefully; wet roots thoroughly as soon as received and plant quickly, not allowing roots to become exposed. Set trees 40 to 60 feet apart each way, depending on soil-fertility, with fruit trees between. Cultivate and fertilize for rapid growth the first few years. It will pay handsomely in high-quality nuts when bearing begins. **Success** and **Moore** are self-pollenizing. **Schley** and **Stuart** often need cross-pollenizing, so plant **Moore** or **Success** among them for pollenization.

## SPECIAL COLLECTION OFFER

ONE 2-FT. TREE EACH, ALL FOUR VARIETIES, DELIVERED FOR **\$3.30**

**Stuart.** Nuts very large, 1¾ to 2 in. long, oblong; brownish shell, marked darker, medium thin and good cracking quality. Kernel is full, plump, bright in color. Best and hardiest variety to cold. **Livewell Coated Trees.**

**Schley.** Nuts medium large, 1½ to 1¾ in., oblong, somewhat flattened, and light reddish brown. Thin shell, separating easily from the kernel, which is full, plump, bright, nutty and rich in flavor with the best quality. Most widely planted Pecan grown. Plant a plenty. **Livewell Coated Trees.**

**Success.** Well named. Large, oblong nuts, tapering to the apex; reddish brown with purplish markings. Shell is thin, partitions thin, and cracking quality good. Kernel is large, full, plump, yellow; flavor sweet and quality very good. Tree is a strong grower, regular and heavy bearer. **Livewell Trees.**

**Moore.** Nuts small to medium, oblong, thin-shelled and crack easily. Kernel is plump, quality and flavor good. Bears heavily at early age and earliest maturity nuts. Resistant to insects and disease. **Livewell Coated Trees.**



## Pecan Prices—Livewell Coated Trees

Your Choice of Varieties—Separate or Assorted

**DELIVERED**—2-ft. budded trees, \$1.00; any 3 for \$2.50; any 12 for \$8.75; any 25 for \$16.75; 100 for \$65.00.

**F. O. B. ATLANTA**—3 to 4-ft. budded trees, \$1.25; 12 for \$12.00; 25 for \$22.50. 5 to 6 ft., \$1.50 each; 12 for \$15.00.

## V-GIANT—WORLD'S LARGEST PECAN

Truly the tremendous giant of the Pecan world, V-Giant has an excellent flavor for its huge size (2¼–3 in. long). To produce good crops of well-filled nuts it is necessary to plant in rich soil and to keep well fertilized. Should be included in every Pecan orchard for its remarkable size—far greater than any other. **Large trees only. F. O. B. \$2.50 each; 3 for \$6.75; 12 for \$24.00.**

## WALNUTS

**Black.** Favorite to grow anywhere! Prolific. Strong trees, rapid-growing. **Delivered**—40c each; 3 for \$1.00.

**Japanese.** Sweet-meated, fairly thick-shelled nuts borne even when trees are young. Beautiful shade tree suited to Southern climate. **Delivered**—\$1.00 each; 3 for \$2.50.



Juicy Southern Strawberries

## HASTINGS' "Golden Root" Strawberry Plants

New Heavy-Bearing Winners for Southern Gardens and Old Dependable Favorites

SUPPLIES VERY SHORT—ORDER EARLY

**Dorsett.** (Perfect.) Uniformly large, blunt, brightest red berries borne over 3-week period, insuring bountiful supplies. Introduced by U. S. D. A. in 1933, it has quickly become one of the leading varieties well adapted to the South. Excellent quality.

**Fairfax.** (Perfect.) Another introduction by U. S. D. A., superb companion to Dorsett which ripens slightly later. Uniformly large, bright deep red, very firm delicious berries borne abundantly over a long season. Grand for home-gardens and market.

**Klondyke.** (Perfect.) An older variety heavily planted in the South. Early bearing on vigorous, upright growth, Klondyke is a real money-maker, either in small or large plantings. Handsome, large, firm berries.

**Missionary.** (Perfect.) Superb for light soils and growing in the Lower South. The great leader in Florida for early, profitable crops. Berries well colored, large, and very firm for marketing.

**Mastodon Everbearing.** (Perfect.) Without question the best of the Everbearing varieties and the one for you to plant. Berries delicious and of good size on dark green plants, bearing a moderate crop in spring and periodically as seasonal conditions are favorable in summer and fall. Best for home-gardens in upper South.

**Southland.** (Perfect.) Another U. S. Dept. of Agriculture variety, particularly recommended for the South. Extremely early and dependable fruiter, giving highest quality, large, firm berries over a long season. Best for the home-garden.

## 1943-1944 SOUTHERN STRAWBERRY \$2.95 GARDEN ASSORTMENT \$5.65

150 vigorous plants (25 each of all 6 varieties described, enough for a small family), delivered to you for **\$2.95**  
300 vigorous plants (50 each of all 6 varieties described, enough for an average family), delivered to you for **\$5.65**

**GARDEN CULTURE:** Use sandy loam soil, or as near as possible. Broadcast rotted manure over land, plowing thoroughly in soil. Lay off rows 2 to 2½ feet apart, mixing in bonemeal before setting plants. Space plants 12 inches apart in row, cutting away excess root-length and using care to set with crown barely above soil-level. Firm well and water. Keep cleanly cultivated at all times.

Side applications of commercial fertilizer high in potash desirable, early spring before growth starts.

Keep berries cleanly picked upon ripening.

Plant November to April in the South.

Use 10,500 plants per acre for field culture; double that number for garden culture.

## Strawberry Plant Prices Delivered to you

|                                   | 100    | 500    | 1000    |
|-----------------------------------|--------|--------|---------|
| <b>Dorsett</b> .....              | \$1 95 | \$5 95 | \$10 95 |
| <b>Fairfax</b> .....              | 1 95   | 5 95   | 10 95   |
| <b>Klondyke</b> .....             | 1 95   | 5 95   | 10 95   |
| <b>Mastodon Everbearing</b> ..... | 2 95   | 9 95   | 17 95   |
| <b>Missionary</b> .....           | 1 95   | 5 95   | 10 95   |
| <b>Southland</b> .....            | 1 95   | 5 95   | 10 95   |

Orders cannot be accepted for less than 100 plants of a variety. Shipments will be made from November 1 to April 15



Elberta Peach—Standard Everywhere. 30c each; 4 for \$1.00

## HASTINGS' BARGAIN HOME ORCHARD

12 STRONG TREES FOR \$3.25, POSTPAID INCLUDING NEW CHINESE CHESTNUT

Hastings makes this special home orchard offer at this low price to bring back to Southern Homes the bounteous fruit and nut harvest for health to all the family, and delicious fruits to be canned for winter use, saving in ration stamps and budget.

Finest flavors and juiciest specimens are tree-ripened in your own yard and picked with your own hands. Complete assortment for the average family. (No changes allowed, please.)

**PEACH, HALE HAVEN.** Midseason.  
**PEACH, MIKADO.** Early.  
**PEACH, ELBERTA.** Late.  
**PEACH, WHITE ENGLISH.** Very late.  
**PLUM, BURBANK.** Midseason.  
**CHERRY, EARLY RICHMOND.** Early.  
**APPLE, ALL-RED DELICIOUS.** Fall.  
**APPLE, NEW RED BIRD.** Early.  
**APPLE, YELLOW DELICIOUS.** Winter.  
**PEAR, KIEFFER.** Late.  
**PEAR, PINEAPPLE.** Late.  
**CHESTNUT, NEW CHINESE.**

One strong tree from our regular stock of each for \$3.25, ppd. 3 trees of each variety (36 in all) for \$8.45, delivered  
 1 large 4 to 6-ft. tree each (except Chestnut) f.o.b. Atlanta for \$6.45

## FAMOUS JUICY GEORGIA PEACHES

Our scions for budding are taken from bearing trees of record. You can depend on them.

**Belle of Georgia.** Midseason. Freestone. Large, beautiful fruit with deep crimson cheek. White firm flesh is delicately marbled, tinted red at pit and of excellent flavor. Large, open-headed, fast growing, hardy tree and prolific bearer. Excellent shipper and popular beauty.

**Carman.** Early. Freestone. Round, brilliant red, splashed darker on creamy white ground; flesh white, red at pit, juicy, tender, sweet, mild and pleasant flavored. Tree large, vigorous and very productive. Useful for home or shipping.

**Early Elberta.** Medium early. Freestone. Large fruit with yellow flesh, firm and juicy. Fine quality, same color and keeps longer than Elberta. For home and profit.

**Elberta.** Late. Freestone. The standard everywhere. Very large, orange-yellow, overspread with red. Flesh is red at pit; juicy, firm but tender, sweet, excellent quality and fine shipper. Tree is large, vigorous, hardy, very productive and starts bearing young. Most popular of all.

**Golden Jubilee.** Early. Earliest yellow freestone. Elberta type. Golden yellow with scarlet cheeks; flesh golden yellow to the pit. Late blooming, hardiest, full and young bearing. Delicious spicy flavor and grand quality for home, canning and shipping.

**Hale Haven.** Midseason. Freestone. This marvelous new Peach represents a cross of J. H. Hale and South Haven and has been found very hardy to cold and adverse conditions. Its golden yellow flesh is quite firm

and its superb coloring before ripening commends it as a market variety of first degree. Two weeks earlier than Elberta. Flavor excellent!

**Hiley.** Early Belle, Hiley Belle. Early. Freestone. Large; white skin with bright red cheek; flesh white, extra quality. Tree is a heavy bearer. Early shipping variety and one of the most profitable. Ripens in early July here.

**Indian Cling.** Blood Cling. Late. Clingstone. Medium-large fruits of dark red, mottled blood-purple; flesh streaked dark red, firm, juicy and fine. Popular and reliable, extra flavored, old-time favorite. Ripens about August 1. Fine for home orchards but too juicy and fine to stand packing and shipping. Plant Indian Cling for its delicious peachy flavor. It is worthy.

**J. H. Hale.** Hale. Late. "Million Dollar Peach." Freestone. Largest of all. Better flavor than Elberta and ripens several days later. Creamy yellow, overspread rich red; flesh yellow, red pit, juicy, fine-grained, sweet and of excellent flavor. Tree vigorous and productive. Fine for all uses; its size and beauty selling it on sight and one to be proud of at home.

**Mayflower.** Earliest of all. Freestone. Medium size; entirely red. The best early, ripening here by late May. Fair quality and a good shipper. Tree is vigorous and blooms late, so seldom gets frost to cause crop failure. Chief value is earliness and sureness of crop.

**Mikado.** Early. Sensational semi-freestone. Rich yellow-fleshed beauty. Extra large, looks like J. H. Hale, with late blooming and very early maturity. Ripens just after Mayflower. You must have this grand early profit maker for market or home orchard. Its late blooming saves frost damage and big early fruits bring in the money.

**White English.** Very late. Clingstone. For Peach pickles and preserving. Tender, melting, juicy, most luscious white flesh and yet quite firm and doesn't bruise easily. Good size fruit with small pit. This is the best kind to use for brandied Peaches, for which it is famous.

### Order Peaches Now for Early Planting

Take your choice of one or more varieties  
 Delivered—2 to 3-ft. trees, 30c each; any 4 for \$1.00; any 12 for \$2.45; any 25 for \$4.65  
 F. O. B.—Heavy 4 to 6-ft. specimen trees, 60c each; any 3 for \$1.50; any 6 for \$2.75; any 12 for \$4.95; any 25 for \$9.45



Mikado—Big, Safe, Early Peach. 30c each; 4 for \$1.00; 12 for \$2.45

## APRICOT

The delicious Apricot blooms early and needs protection from late frosts. Planted on hillsides with northern exposure will tend to keep trees dormant until greatest frost danger is past. Protection from frost and proper spraying will insure fine crops of this delightful fruit. Set trees 15 to 20 feet apart. Hardy as and ripens just before peaches.

**Early Golden.** Of medium size and most satisfactory for home and commercial orchards. Round with smooth skin, fine flavor, juicy and sweet. Fruit is pale orange, tinged red. Ripe in June.  
 Delivered—2 to 3 ft., 50c each; 3 for \$1.25; 12 for \$3.45.

## NECTARINE

Really a smooth-fruited Peach, slightly smaller in size and of richer quality. There are no essential differences. Trees, requirements and propagation are the same. Plant a few along with your Peaches for a delightful flavor. They do not take up much room and provide a quantity of fine fruit.

**Hunter.** Light greenish yellow, smooth skin, with dark red cheek. Flesh is firm, juicy and delicious. Bears from late July to early August. Clingstone. An excellent home orchard or garden fruit.

Delivered—2 to 3 ft., 50c each; 3 for \$1.25; 12 for \$3.45.



Early Richmond Cherries. 50c

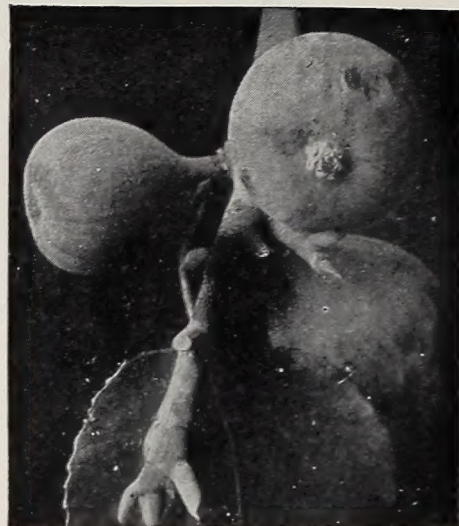
## SUPERB CHERRIES

Satisfactory in the upper South. Sweet Cherries do best on high land; ideal for back yards. Sour Cherries are easy to grow and heavy bearers for home or market.

**Black Tartarian.** Sweet. Early. Delicious to eat and can. Fruit almost black, large, heart-shaped, with small pit; purplish red flesh, meaty, juicy and rich. Tree a regular bearer, extra large and long lived. Ripens in May and June. F. O. B.—4 to 6 ft., 85c each; 3 for \$2.00; 12 for \$7.45. Delivered—2 to 3 ft., 50c each; 3 for \$1.25; 12 for \$3.45.

**Early Richmond.** Sour. Earliest. Profitable; delicious; cherry-red, thin skin, easily separated from pulp; flesh pale yellow, pinkish juice, tender and melting, small free stone. Heavy bearer in May-June.

F. O. B.—4 to 6 ft., 85c each; 3 for \$2.00; 12 for \$7.45. Delivered—2 to 3 ft., 50c each; any 3 for \$1.25; 12 for \$3.45.



Celeste Figs. 50c

## DELICIOUS PLUMS

Always popular, quick to grow and bear abundantly in the upper South.

**Abundance.** Japanese. Medium, roundish to sharp-pointed; early; large; pinkish red, changing to darker red, mottled, thin bloom; flesh yellow, juicy, sweet, tender and melting. Prolific tree. Prices below.

**Burbank.** Japanese. Dark red on yellow ground, mottled, thick bloom; flesh deep yellow, juicy, tender, firm, sweet, and of best quality. Handsomely colored, keeps and ships well. Ripens week after Abundance. Thin fruit for perfection. Tree large, vigorous, very productive. Prices below.

**Japanese Gold.** Japanese. Fruit large, clear golden yellow. Healthy, hardy tree bearing extra-heavy crops practically every season. Midseason maturity and one of the very best Plums for average Southern home orchard. Prices below.

**Red June.** Earliest Japanese. Garnet-red, mottled, thin bloom on fruit; flesh light yellow, rather meaty, sweet. Ripens week earlier than Abundance. Large, roundish ovate, good shipper. Tree large, hardy, vigorous, spreading, productive, healthy. Prices below.

**Shropshire Damson.** Small, roundish, purplish black, thick bloom dots numerous; flesh golden yellow, juicy, firm but tender. Well-known English Plum, vigorous, prolific. Should be in all home orchards. Late variety.

**Plum Prices** F. O. B.—4 to 6-ft. trees, 75c each; any 3 for \$1.85; any 12 for \$6.75. Delivered—2 to 3 ft., 40c each; any 3 for \$1.00; any 12 for \$2.95.

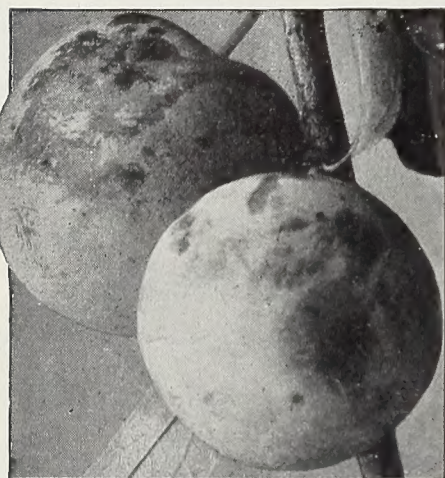
## HUGE PERSIMMONS

The Japanese Persimmon is one of our finest fruits, coming into strong market demand and it is luscious to eat and use in frozen desserts. Hardy in the lower and middle South.

**Tane-Nashi.** Japanese. Large to extra large, 3 1/4 x 3 3/8 in., beautiful, conical and smooth; light yellow changing bright red; flesh yellow and seedless, quality supreme. Most desirable market variety, uniform size, quality and shape. Vigorous and productive; best light-fleshed variety. Ornamental tree or shrub as well as useful. Delivered—2 to 3 ft., 75c each; 3 for \$1.95.

## MULBERRY

**Hick's Everbearing.** Vigorous-growing tree thriving in the Southern States where it is so well adapted. Good Mulberries are so easily grown that it is a shame not to include them in our plantings. Rich sweet fruits all summer. Delivered—75c each; 3 for \$2.00.



Burbank Plums. 40c

## FINEST PEARS

Bear in 3 to 5 years from planting but prune back heavily the first few years to keep in reach for sprayer and fruit.

**Bartlett.** Large; pyramidal shape; clear yellow with blush on exposed cheek, dotted russet; flesh fine-grained, slightly granular at center, buttery and rich, very juicy, excellent flavor, good quality. Widely adapted, prolific favorite. Prices below.

**Kieffer.** Large to very large, roundish oval; rich golden yellow, red blush on sunny side; flesh whitish, juicy, firm and remarkable keeper; improves on ripening indoors. Refreshing wine flavor. Prices below.

**Pineapple.** Practically blight-proof; most valuable for lower South. Strong, vigorous and productive. Large, handsome; pineapple odor. Flesh coarse, crisp, juicy; fine for cooking or canning. Safest variety to plant. Prices below.

**Seckel.** Sugar Pear. Small, rich yellowish brown with deep brownish red cheek; flesh unusually fine-grained, sweet, very juicy, melting. Our richest and highest flavored Pear. Extremely prolific; brings fancy prices. September maturity. Prices below.

**Pear Prices** F. O. B.—4 to 6-ft. trees, 85c each; any 3 for \$2.00; any 12 for \$7.45. Delivered—2 to 3 ft., 50c each; any 3 for \$1.25; any 12 for \$3.45.

## SWEETEST FIGS

A Fig orchard or tree requires very little care. Figs bear from June to November in the lower South and usually two crops a season in the upper South. Productive.

**Brown Turkey.** Medium to large, broadly pear-shaped; short and thick stem; few ribs; coppery brown color; flesh white to slightly amber, shading pink about the seeds, solid and excellent quality. Delivered—strong plants, 50c each; 3 for \$1.25; 12 for \$3.45.

**Celeste.** Small to medium, pear-shaped, ribbed; purplish violet-brown with bloom toward neck; flesh whitish, shading rose at center, firm, juicy, sweet and excellent quality; short, stout stem. Hardest variety; prolific, vigorous. Delivered—strong plants, 50c each; 3 for \$1.25; 12 for \$3.45.

## FRUITING QUINCE

Easily grown, the fruiting-type Quince makes a good ornamental and useful planting.

**Orange.** Handsome orange-colored fruit. Delivered—Heavy plants, \$1. ea.; 3 for \$2.50.



Kieffer Pears. 50c





New Alfred Coreless Blackberries. 10 for 85c; 100 for \$5.95

## SAVE SUGAR WITH GARDEN BERRIES

### NEW YOUNGBERRY

This delicious, quick and heavy bearing, vigorous-growing discovery with berries that are even larger than the Loganberry, is purple-black in color and flavored somewhat like a Raspberry. Four years' comparative tests at Georgia Experiment Station show the Youngberry to be the earliest and heaviest bearing berry of this class. It is disease-resistant. Plant at least 4 by 8 ft. apart, or in a single row along a fence for home use. Give clean cultivation. Makes delicious fresh berries, jellies, jams, etc. Delivered—10 plants, 85c; 100 plants, \$5.95.

**NEW THORNLESS YOUNGBERRY.** Delivered—5 for 75c; 10 for \$1.25; 100 for \$8.95.

### NEW BOYSENBERRY

A new glorified Youngberry of tremendous size and delicious flavor. Truly a most prolific and high-quality berry for home-garden, local market, and shipping. Makes delicious jellies and jams and well adapted for wine-making. Color picture on page 8. Delivered—5 for 75c; 10 for \$1.25; 100 for \$8.95.

**NEW THORNLESS BOYSENBERRY.** Delivered—5 plants, \$1.25; 10 plants, \$2.00; 100 plants, \$15.00.

## CHOICE RASPBERRIES

**CULTURE.** Plant in rows 5 to 6 ft. apart and 3 ft. apart in the row. Give them rich soil, fertilize well and cultivate thoroughly throughout the growing season. Fruit is borne on preceding year's new growth so all old canes should be removed after fruiting. Varieties below are best for the upper South.

### Sodus Purple

Said to be the heaviest yielding Raspberry and highly recommended to southern Raspberry growers. Fine, large purple berries to tempt the most fastidious. Delivered—10 plants, \$1.00; 100 plants, \$6.95.

### Logan Blackcap

Disease-resistant new blackcap Raspberry ripening early in the South to give abundant yields wherever Raspberries can be grown. Large, glossy black. Holds well in dry weather. Delivered—10 plants, 85c; 100 plants, \$5.95.

### St. Regis Red

Sometimes called Everbearing. It produces a good crop in spring and often a second crop in fall. Bright crimson, large, pulpy fruit with pronounced Raspberry flavor. It is a prolific, satisfactory grower and certainly worth care in growing. Delivered—10 plants, 85c; 100 plants, \$5.95.

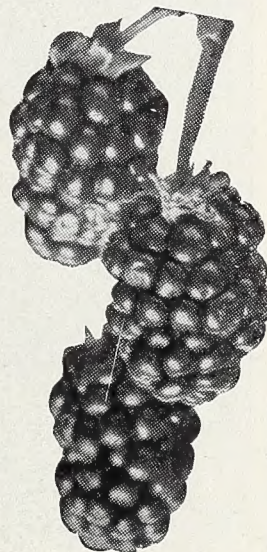
### Van Fleet—Southern Red

The Raspberry for farther South. It is considered by far the best red for the South. Strong, vigorous, and a prolific bearer of delicious, subacid, medium fruits. Especially fine for the home-garden. Delivered—5 plants, 75c; 10 plants, \$1.25; 100 plants, \$8.95.

### Newburgh, New Red

Better than Latham, which it is fast displacing

A New York introduction very resistant to mosaic. Fruit unusually large, bright red and firm, of highest quality. Plants are unusually productive and growers of this new variety are well pleased with it besides its disease resistance. Delivered—10 plants, 85c; 100 plants, \$5.95.



New Youngberry  
10 for 85c

## SOUTHERN BLACKBERRIES

**CULTURE is alike for Dewberries.** Plant in 6-ft. rows, plants 3 ft. apart in the row. Cultivate often while making growth and after harvesting cut to the ground all old canes that have borne their fruit. Pinch out the tips of new canes to branch.

### Early Harvest

Fine variety for home use and also for market. It ripens at least 2 weeks ahead of other Blackberries and at the same time makes large and excellent quality berries. Delivered—10 plants, 85c; 100 plants, \$5.95.

### New Alfred—Coreless

Mammoth new Blackberry particularly suited for the home-garden for eating fresh as well as for canning. Also a good commercial sort, displacing Eldorado and other older varieties.

Delivered—10 plants, 85c; 100 plants, \$5.95

### Brainerd

Recommended very highly by the Department of Agriculture after numerous tests. Unusually well-flavored, heavy-yielding sort well adapted for Southern plantings. Bears extra-heavy clusters of highest quality berries that have very small seeds.

Delivered—5 plants, 75c; 10 plants, \$1.25; 100 plants, \$8.95.

## DIXIE DEWBERRIES

### Lucretia

Best of all Dewberries. Unusually large berries of finest flavor. Plants are very prolific and strong growers. The soft and very sweet berries are produced early. Valuable for home and local market.

Delivered—10 plants, 85c; 100 plants, \$5.95.

## Cash in on Berries

Fresh berries for local markets and roadside stands are usually quite profitable. Commercial and community canning, home-made jellies, jams and preserves, are fast coming popular. Wineries are calling for all the berries and grapes that can be locally grown.

Depend on Hastings' for the right plants and dependable varieties for profit and home use. Ask for our special quotation on quantity lots.

Strawberries offered on page 4



Logan Blackcap Raspberries. 10 for 85c

# PLANT GRAPES For Profit

# Home Collection of Hardy Grape Vines

**GRAPE CULTURE.** Set bunch-type Grapes 6 to 8 feet apart each way, leaving 3 buds, spreading and covering roots carefully. Set Muscadines and Scuppernongs 12 to 15 feet apart, placing males nearby bearing vines. Rotted manure is excellent fertilizer; broadcast around the vines. Keep cleanly cultivated.

Prune in winter according to system used in training the vines. Usually, nearly three-fourths of the vine is cut away each year. In pruning, remember the fruit is produced on new shoots, from buds on the previous season's growth. Retain medium-sized canes, removing weak and old canes. Grapes require spraying with Bordeaux-lead arsenate mixture twice or more annually. Only Scuppernongs and Muscadines require male plants nearby.



Concord. 20c

Caco. 35c

Niagara. 25c

Fredonia. 40c

## BEST SOUTHERN MUSCADINES

**Creek.** New extra sweet reddish purple Muscadine borne in large clusters. Thin skin; medium size. Good wine variety. Ripens about October 1.

**Hunt.** New favorite with vigorous vine and regular bearing habits. Fruit large, black, bunching well, excellent flavor. Ripens late August in mid-South.

**James.** Large, purplish black Grapes, borne in clusters of 10 to 12 berries, often as large as a pigeon egg. Vine is strong, healthy and free from disease. It ripens after Scuppernong and its delicious sweetness lingers with you. Mid-September.

**Thomas.** The popular favorite for making wine. Medium-sized, juicy berries of darkest red in small clusters. Prolific, free from disease and famous for its Muscadine Punch. Mid-September.

**Yuga.** Light bronze Grape of excellent quality. Large clusters to ripen in late September. Very sweet and holds on vine unusually well.

**MALE.** Plant one male for up to 10 bearing plants; same plants good for Scuppernongs or Muscadines.

Prices all varieties delivered, including Scuppernong and male plants: 50c each; any 5 for \$2.25; any 10 for \$4.00; any 100 for \$37.50.

## MUSCADINE—SCUPPERNONG COLLECTION \$1.95

One strong vine each, of Hunt, Thomas, James, genuine bronze Scuppernong—AND—one male vine to pollinize all of them. POSTPAID FOR \$1.95. (You save 55c.) Order to plant early for best results.



Thomas Muscadine. 50c; 5 for \$2.25  
White or Bronze Scuppernong, also 50c

## SOUTHERN HOME GRAPE COLLECTION—85c

Nothing in this whole Catalog will give greater satisfaction than this splendid set of Hardy Grapes. Every home, if only on a city lot, can find space to plant them. One each of Concord, Caco, Niagara, and

Fredonia, strong, well-rooted, Best size, sure to do well. Delivered—Only 85c. Order for your friends, too—A real bargain in fine Grapes. (\$1.20 value.)

## \$1.85 Special Grape Collection (\$2.90 value).

For our most exceptional Grape offer and the greatest bargain we shall include 2 plants each of Concord, Caco, Niagara, Fredonia, and also 2 of Moore's

Diamond, the great white Concord. 10 Grape-Vines, all strong new plants, for a real Home Grape Planting—Delivered for \$1.85. Order several!

### Fredonia

By far the finest of the new early Grapes, ripening well ahead of Concord and continuing to hang on the vine in perfect condition for many days until harvested.

Fredonia is a large blue-black Grape in heavy bunches, ripening very uniformly to make it just about perfect for home use or market. It is the superb TABLE GRAPE. And it makes excellent juice.

We are proud to offer this new Grape to you this season in our "Home Grape Collection" and separately as priced. Delivered—40c each; 5 for \$1.65; 10 for \$2.95.

### Concord

Best-known Grape in existence. Large berry and bunch; blue-black thin skin; flesh sweet and tender and of good quality. Strong grower, prolific bearer and most popular variety for home or market. Delivered—20c each; 5 for 85c; 10 for \$1.50.

### Lutie, the Southern Grape

Recommended as the best and most satisfactory for the South. Medium-large berries; large bunches; dark red; very sweet and excellent quality. Ripens just after Moore's Early and hangs on the vine until Concord is ripe. Valuable. Delivered—35c each; 5 for \$1.50; 10 for \$2.50.

### Moore's Diamond

Greenish white Concord seedling, without yellow spots as on many white Grapes. Berries large, sweet and fine quality. A hardy, profuse bearer, ripens early and one of the best on the list. Delivered—25c each; 5 for \$1.00; 10 for \$1.75.

## GENUINE WHITE SCUPPERNONG

Well-known Southern favorite for covering arbors, fences, and trellises. Vigorous, rapid-growing, healthy vine, abundantly producing large, bronzy colored berries of delicious taste; flesh sweet, pulpy and vinous. Very famous variety. Delivered—Strong plants, 50c each; 5 for \$2.25; 10 for \$4.00; 25 for \$9.65.

Male Plants. Plant one male to each 5 to 10 bearing plants for pollination. Same prices.

### Caco

Most delicious of the red Grapes. Early, sweet, and tender. Large, compact, rich wine-red fruit. Early bearing. Strong and vigorous. Excellent for home use. Delivered—35c each; 5 for \$1.50; 10 for \$2.50.

### Niagara

Best white Grape grown. Large berries and large bunches; greenish yellow skin; sweet, pulpy flesh. An all-round good Grape. Vigorous and satisfactory grower. Delivered—25c each; 5 for \$1.00; 10 for \$1.75.



Boysenberry. 5 for 75c  
See page 7

# HARDY PERENNIAL PLANTS

## Our Low Postpaid Plant Prices

Plants priced at 30c each are any 3 for 75c (25c each); 12 for \$2.45 (20½c each); 100 for \$14.50 (14½c each). 35c plants are 3 for 90c; 12 for \$3.00. 40c plants are 3 for \$1.00; 12 for \$3.45. 50c plants are 3 for \$1.25; 12 for \$4.45. 60c plants are 3 for \$1.50; 12 for \$5.00.

Varieties starred (★) are low growing, suitable for rock- or wall-gardens

### Achillea

Milfoil; Yarrow. Delightful, easily grown, hardy plants for sunny places in good garden soil.

**Millefolium roseum.** Rose-pink flowers. Soft foliage. 30c each.  
**Perry's White.** Largest, finest double. 30c each.



Chrysanthemum, Little Bob Cushion. 40c

### HARDY ASTERS

Michaelmas Daisies; Starworts. Showy late summer and fall. Give sunny exposure and they grow and bloom in almost any soil.

Collection of all 6  
Hardy Asters for **\$1.95**

#### FRIKARTI, WONDER OF STAEFA.

Flowers 2 to 2½ inches across, lavender-blue, all the time from May until November. A glorious garden plant and greatest hardy Aster for garden and cutting. 60c each.

**Harrington's Pink.** Silvery rose-pink. Showy. 50c each.

**Beechwood Challenger.** Rich red flowers in abundance. 40c each.

**Little Pink Lady.** Lovely pink on dwarf plant. 35c each.

**Royal Blue.** Rich deep blue novelty. 35c each.

**Snowbank.** Superb new white. Strong grower. Cut-flowers. 40c each.

### Hastings' New Hardy CHRYSANTHEMUMS for the South

**Astrid.** (Korean.) Superb soft pink with yellow centers. 30c each.

**Dahlia Flower.** Rich deep red, like cactus Dahlia. Superb. 60c each.

**Early Wonder.** (Pat. 490.) Delicate peach-pink cut-flower. 75c each.

**Golden Spoon.** Sensational newest novelty. Spoon petals. 40c each.

**Jasper Spoon.** Bronze overtone with gold relief. Superb. 40c each.

**Little Bob Cushion.** The Azalea-like Mum, covered with blooms. 40c each.

**My Lady.** Double, orange-yellow "Dean" type. 40c each.

**Nancy Copeland.** (Korean.) Red. Single flowers of spectrum red. 30c each.

**Orchid Spoon.** Loveliest of the new spoons. 40c each.

**Treasure Trove.** Lemon-yellow bedder. Excellent. 30c each.

**SPECIAL COLLECTION OFFER:** One fine plant each of the ten varieties above, including the new Koreans (\$4.25 value) for only **POSTPAID \$3.25**

### Chrysanthemum maximum • Shasta Daisy

**Admiral Byrd.** Immense cut-flowers. Summer-blooming. 50c each.

**New Double White Swan.** Finest new introduction in years. Gorgeous double-crested flowers coming very early. Special, 40c each; 3 for \$1.00.

**NORTHLAND DAISY, KRISTINA.** New type. Large rose-pink flowers. 35c each.



Aquilegia, Dobbies' Imperial Hybrids. 40c

### Aethionema Persian Candytuft

**Wartley Rose.** Blue foliage with beautiful Daphne-like pink flowers. 40c each.

### ★Ajuga

**Reptans.** 3 in. Creeping ground-cover for shady places and rockeries. Deep purplish blue flowers. Bronze foliage. 40c each.

**Pink Spire.** Soft pink in early summer. 40c each.



Aster Frikarti, Wonder of Staefa. 60c

### Anchusa

Alkanet; Cape Forget-Me-Not. Of easy culture in any sunny and well-drained soil.

**Italica, Dropmore.** 3 to 4 ft. Bright blue flowers. Vigorous growth. 30c each.

★**Myosotidiflora.** 12 to 18 in. Compact forget-me-not flowers in April. 40c each.

### Anthemis

**Moonlight.** Hardy Golden Marguerite. Finely cut, fern-like foliage with yellow daisy-like flowers from May to October. Valuable for cutting as well as in the border. 40c each.

### Aquilegia • Columbine

Graceful, distinctive, airy foliage. Delicate arrangement of yellow, mauve, rose, flesh, lavender, blue, purple flowers on 2-foot stems.

**Dobbies' Imperial Hybrids.** Long-spurred, finest of all strains. Delightful colors and largest Columbines grown. 40c each.

### ★Arenaria • Sand Wort

**Montana.** Trailing evergreen with dense foliage; covered with large white flowers in spring. 30c each.

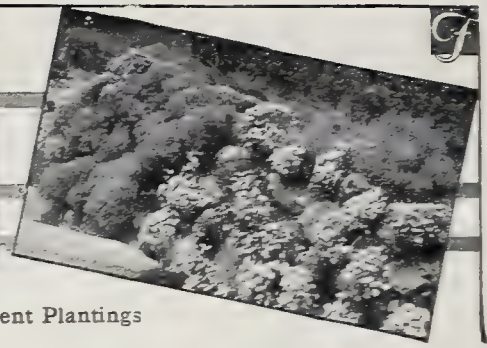
### Artemisia

**Silver Queen.** 30 in. Decorative plant in border or for bouquets, baskets, and other floral pieces. May be cut and dried for use all winter. Bright silvery stems and foliage. 30c each.



Chrysanthemum, Orchid Spoon. 40c

F



F

Use Our Hardy Flowering Perennials for Showy Permanent Plantings

## Campanula

Canterbury Bells; Bellflower. 2 to 3 ft. Very showy flowers in June for garden and cutting. The single bells are best.

**Persicifolia, Double Blue.** Numerous branches crowded with large deep blue bells. Popular wherever grown. Biennial. 35c each.

## Catananche • Blue Cupid's Dart

**Coerulea Major.** Rich lavender-blue flowers above silvery foliage in midsummer, when good flowers are few. 40c each.

## Delphiniums

Fall and winter planting is best.

**Belladonna.** Sky-blue. 30c each.

**Bellamosum.** Rich deep blue. 30c each.

**Hastings' California Hybrids.** New giants surpassing even the best English strains. 40c each; 3 for \$1.00.

## Dianthus

Hardy Pinks. Spreading plants with slender grayish foliage, surmounted by sheets of sweetly fragrant flowers.

**Meg Gardner.** Best of Sweet Pinks. White flowers, vivid crimson centers. 50c each.

**Uncle Sam.** Contrasting white with red centers. 50c each.

## Dicentra

Bleeding-Heart. Bushy plants 1½ feet high with long racemes of graceful heart-shaped pink flowers in spring.

**Spectabilis.** True Bleeding-Heart. Extra-heavy clumps. 60c each; 3 for \$1.50.

**Eximia.** Dwarf growth with plumed flowers. Very unusual. 40c each.

## Doronicum

**Excelsum.** Immense, daisy-like golden yellow flowers on long, stiff stems for fine cutting. Blooms early. 40c each.

## Epimedium

**Sulphureum.** Bright yellow flowers in late spring. Attractive leathery foliage. 40c each.

## Funkia

**Undulata variegata.** Plantain Lily. Lilac flowers in spring. 30c each.

## Hardy Fuchsia

**Longipedunculata.** For shady places. Purple and red, pendent flowers by hundreds all summer. 40c each.

## Gaillardia

**Golden Goddess.** (Everblooming.) 24 in. Immense; rich golden yellow. 40c each.

## Gerbera

Transvaal Daisy. Handsomest daisy. Plant with crown above soil surface. Give drainage.

★**Jamesoni Hybrids, Mixed.** Beautiful single flowers in lovely colors. 40c each; 3 for \$1.00; 6 for \$1.85; 12 for \$3.45.

## Gypsophila

Baby's Breath. Large, graceful, airy panicles of miniature, snow-like white flowers.

**Bristol Fairy.** Finest, largest, double white. 40c each; 3 for \$1.00; 12 for \$3.45.

**Rosy Veil.** Dwarf; lovely pink. 40c each.

## Geum

Avens. Showy border and rock-plants, 12 to 18 in. high; flowering April to July.

★**Lady Stratheden.** Double; golden. 35c.

★**Mrs. Bradshaw.** Double; scarlet. Very showy. 35c each.

## Hedera • English Ivy

**Gracilis.** Very dwarf. For rockeries or for pots, indoor window gardens. 30c each.

## Hemerocallis • Day Lilies

Day-or Lemon Lilies. Tall, graceful, 2 to 3-ft., grass-like plants. Delightful lily-like flowers. Set in full sun in well-drained beds. Plant October to April. Thrives in the South.

### NEW BETSCHER HYBRIDS

**D. D. Wyman.** Golden, tawny splashed. June, July.

**Goldeni.** Golden orange. Early June. 3 ft.

**Gypsy.** Brilliant deep orange flowers on medium stems in June.

**Lemon King.** Fluted lemon-yellow flowers, medium stems, midsummer.

**Peggy Perry.** Scarlet-orange.

Any of above, 40c each; any 3 for \$1.00; any 6 for \$1.85; any 12 for \$3.45

### Standard Varieties of Day Lilies

The following list contains a superb selection of varieties which will bloom from spring to late summer, often repeating in fall.

**Aurantiaca.** Large; sweetly scented; orange, reverse Indian yellow. 4 ft. May, June.

**Dumortieri.** Rich cadmium-yellow with bronzy yellow reverse. 2 ft. May.

**Dr. Regel.** Rich orange-yellow blooms in late April or early May. 2 ft.

**Flava.** True Lemon Lily. Full; clear yellow; sweetly scented. 2½ ft. May.

**Kwanso fl.-pl.** Double golden bronze.

**Middendorf.** Very fragrant; rich orange-yellow. April, May. 1½ ft.

Separate varieties, 30c each; 3 for 75c; 12 for \$2.45, postpaid

**Collection: 1 each of above 11 Day Lilies with new Betscher Hybrids, for \$2.65, postpaid**

## Heliopsis

**Golden Rays.** Superb golden yellow cut-flowers with strong stems. 50c each.

## Heuchera

Coral Bells; Alum Root. Coral bell-shaped flowers in fairy-like spikes in summer.

★**Matin Bells.** Bright coral. 40c each.

## Hibiscus

**Mallow Marvels, White, Pink or Red.** Rosemallow. Improved Giant-flowering. 30c each.

## Iberis • Hardy Candytuft

Hardy Candytuft. Rockery and edging delight. Dwarf, 6 to 10 in., and very desirable.

★**Little Gem.** Dwarf white. 35c each.

## Lavandula

**Vera.** True Sweet Lavender. Rich lavender-blue flowers. 30c each.



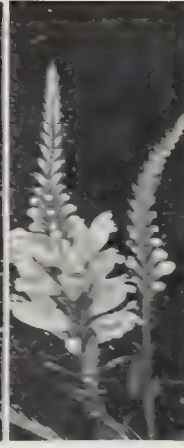
Day Lilies (Hemerocallis)



Heuchera



Hardy Salvia



Physostegia

# HARDY GARDEN IRIS

**Ambassadeur.** S. bronzy; F. maroon.  
**Dauntless.** Immense red-purple. 35c each.  
**Eleanor Roosevelt.** Purple. Fall bloomer.  
**Indian Chief.** Red-purple.  
**Lent A. Williamson.** S. violet; F. pansy.  
**Loreley.** S. yellow; F. blue, cream.  
**Mary Barnett.** Huge blue.  
**Mother of Pearl.** Soft gray-white.  
**Pallida speciosa.** Deep blue.  
**Princess Beatrice.** Pale lavender-blue.  
**Susan Bliss.** Fine lilac-pink.  
**Violacea grandiflora.** Vigorous; lavender.

PRICES—1 each of all 12 (unlabeled) for \$1.69. SEPARATE VARIETIES—3 for 60c; 6 for \$1.00; 12 for \$1.95, postpaid. (Except Dauntless.)

## Hastings' Siberian Iris

Bloom profusely. Like moist places best.

**Kingfisher Blue.** 3 ft., bright blue. Very showy in garden and excellent for cutting.

**Mrs. Rowe.** 3 ft., silvery white. Easily grown, very prolific, striking white flowers.

**Pseudacorus.** 2 ft., rich yellow species.

PRICES—30c each; 3 for 75c; 12 for \$2.45.

## Hardy Ochroleuca Iris

For superb cut-flowers, like English bulbous Iris. Perfectly hardy; easily grown in heavy, moist soil; prefer morning sun.

**Yellow, Cream, White.** Order by color.

PRICES—60c each; 3 for \$1.50; 6 for \$2.75.

## \*Rosa Rouletti

Rock-Garden Rose. Little gem, 10 in. high, with miniature pink buds and 1-inch double rose-pink flowers. Make delightful edgings. Perfectly hardy. 40c each.

## Salvia · Hardy Sage

3-ft. long racemes of 1-inch flowers for border and cutting. Very popular.

**Pratensis rosea.** Pink. 30c each.

**Pratensis tenori.** Blue-violet. 30c each.

## Santolina

**Lavender Cotton.** Very dwarf border or edging plant with silvery aromatic foliage. Very choice. 30c each.

## Sedums

**\*Acre.** 2 in. creeping. Mossy green foliage mats; golden flowers. 30c each.

**\*Sarmentosum.** Dwarf yellow. Fine to fill in walk and steep crevices. 30c each.

**\*Spectabile, Brilliant.** 18 in. Large leaves. Red flowers in September. 30c each.

## Stokesia

**Cyanea.** Cornflower Aster. Perennial Cornflower with bright blue flowers. 30c each.

## Teucrium Chamaedrys

Very rich glossy green dwarf border plant superbly suited for outlining beds, walks, etc. Plant 8 in. apart. 30c each.

## Tritoma

**Pfitzeri Hybrids.** Red-Hot Poker. Exotic orange-scarlet shafts; grassy foliage. 35c each.

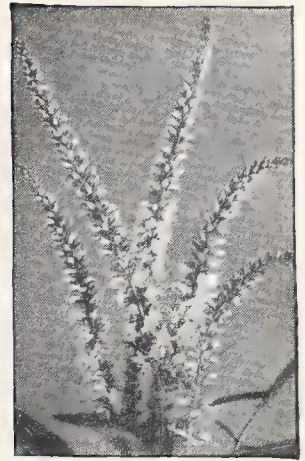
## Veronica

**Blue Spire.** 18 in. Long bright lavender spikes from glossy green foliage. 40c each.

**Spicata rubra.** 12 in. Large rosy red flower-spikes in early summer. 40c each.

## LOW POSTPAID PRICES

Plants priced at 30c each are 3 for 75c (25c each); 12 for \$2.45 (20½c each); 100 for \$14.50 (14½c each). 35c plants are any 3 for 90c; 12 for \$3.00. 40c plants are any 3 for \$1.00; 12 for \$3.45.



Veronica



Salvia—Popular Hardy Sage



Hardy Garden Iris for Every Home



Hastings' Siberian Iris—Fastest Growing

## \*Liatris

**Scariosa.** New dwarf form with lovely rosy lavender flowers. 35c each.

## Lythrum

**Bonny Pink.** Bright rose-pink Loosestrife. Beautiful cut-flowers in midsummer. A grand novelty. 50c each.

## Lysimachia

**Vulgaris.** 2 ft. Bright yellow flowers from plants with large oval leaves. 35c each.

## \*Mazus

**Reptans.** Tiny, creeping ground-cover with dainty violet-blue flowers. 30c each.

## Mertensia

**Virginica.** Virginia Bluebells. Plants with large, smooth leaves surmounted by large panicles of bell-shaped blue, changing to pink, flowers in spring. 30c each.

## Monarda · Bee Balm

**Dahliatown Orchid.** Erect, showy perennial with lovely orchid flower-heads in midsummer. 35c each.

## \*Nepeta

**Six Hills Giant.** New. Catmint. Rapid-growing ground plant; myriads of lavender-blue flowers in summer. Likes sun. 30c each.

## Physostegia

**Vivid.** False Dragonhead. Many long spikes of mauve flowers all summer. 30c each.

## Platycodon

**Grandiflorum.** Bell-like flowers most of the summer. Blue or White, 30c each.

## Pyrethrum

**New Hybrids.** Painted Daisy. Exquisite daisy flowers in pastel colors. Fine for table arrangements. 30c each.

## Rudbeckia · Golden Glow

Old-fashioned perennial favorite of our grandmother's garden. Easily grown. 30c.

## MOST BEAUTIFUL IRIS FOR THE SOUTH

**Hardy Oriental Sensations. See Collection Offer**

**Astarte.** Dark violet. Enormous double flowers, often 10 inches across. Prolific.

**Blue Waves.** Wisteria blue, golden center. Striking semi-double show flower.

**Chutsai.** Purple. Large single violet-purple with rich white veinings.

**Hercule.** Lilac-blue. Immense 6-petaled double flowers of clear lilac-blue.

**Kagaribe.** Red. Huge flowers of Chinese-red with yellow spot on each petal.

**Jeanette Parry.** White. Large, striking, soft blue veins. Standards mulberry. Tall.

**Kokonoiro.** Purple, Gold. Huge double violet-purple. Petaloids white, tipped violet.

**La Favorite.** White. Double flowers, veined blue with rich purple center.

**Mahogany.** Red. Crested petals on this huge, double velvety mahogany-red.

**Repsime.** Blue. Interesting giant double, varying blends of white, blue and violet.

**Tigo No Hosta.** Purple. Double violet-purple; golden centers tipped velvet-plum.

**Yezonishitae.** Lavender. Very large reddish lavender, shaded purple.

PRICES—Your choice, 40c each; any 3 for \$1.00; any 6 for \$1.85; any 12 for \$3.45.

COLLECTION OFFER—1 each of above 12, finest for the South, postpaid. . . . . **\$2.95**



Hardy Phlox, Beacon—35c each; 3 for 90c

## Hastings' Hardy Phlox for Dixie Gardens

### PERENNIAL PHLOX, DECUSSATA

Finest and most satisfactory varieties, everblooming type, in any rich, well-drained soil. Plant in clumps or masses to insure coolness at roots. Mulching is desirable. Best in cooler locations, protected in the South from hot afternoon sun.

- Apollo.** Brilliant crimson. Medium height.
- B. Compte.** Tall, rich satiny amaranth. Contrasts with yellow flowers.
- Beacon.** Tall. Bright cherry-red. One of the very best.
- Blue Boy.** As near blue as can be found in *Phlox decussata*.
- Break o'Morn.** Delicate pink with red eye.
- E. I. Farrington.** Low. Apricot-pink; large heads and grand.
- French Beauty.** Mammoth trusses of glowing pure pink.
- Innocence.** Pure white. Large and tall.
- Moonlight Dream.** Pure white with faint green center spot. Very lovely.
- New Bird.** A brilliant amaranth-red.
- Painted Lady.** Tall. Silvery pink, salmon shadings; cherry eye.
- Sunshine.** Deep salmon-rose beauty.

PRICES—Varieties above: 35c each; 3 for 90c; 12 for \$3.00; 100 for \$20.00

**SPECIAL HARDY PHLOX COLLECTION \$2.95**  
One each of the 12 grand varieties described above, postpaid for \$2.95. For a glorious show, 3 each (36 plants) for \$7.95.

### PHLOX SUBULATA, GARDEN THRIFT

See pink and rose-red clumps edging the stepping-stones and sunny banks all over the South. Blooming in early spring and believed our showiest and most thrifty ground- and bank-cover; excellent for rockeries, and a general favorite. Pretty moss-like foliage is completely covered with a sheet of bloom in spring.

- ★**Snow White.** Pure white.
- ★**Rosea.** Rose-pink.
- ★**G. F. Wilson.** Lavender.
- ★**Vivid.** Pink, red eye.

Prices—30c each; 3 for 75c; 12 for \$2.45

★**Dixie Brilliant.** *Phlox nivalis sylvestris*. Finest, largest and richest color of all dwarf Phlox or hardy garden Thrift. The big rosy red florets cover a half dollar. Faster growing, larger plants with sheets of dazzling color make Dixie Brilliant the greatest ground-cover that we can plant and the newest and best of all dwarf plants for rockeries, banks, low bedding and edging. Hardy to heat and cold, North or South. Hastings' Georgia introduction.

30c each; 5 for \$1.00; 12 for \$2.25; 100 for \$14.50



Oriental Iris for the South

# PEONIES...

## *to Grow in the South*

Magnificent Peonies are being very successfully grown in almost all sections of the South except in Florida and in the light, sandy soils of the Atlantic and Gulf coastal regions. Try them in your garden. Plant Peonies in fairly rich but well-drained soils, with exposure to only the early morning sun in the deeper South. Set roots barely under soil surface. Feed with bonemeal. Never use any manure except Wizard Sheep Manure which has been heat-treated.



Peony, Mons. Jules Elie,  
Heavy Division. 50c

### ★ SPECIAL COLLECTION ★ OFFER

1 each of 12 varieties marked with ★ \$5.75  
(value \$7.25) postpaid for .....

1 each of any 6 varieties marked with ★ \$3.25  
postpaid for .....

*Separate varieties only at regular prices*

## Hastings' Star Dozen

### BEST PEONIES FOR THE SOUTH

★ **Felix Crousse.** 8.4. *Red.* Bomb type. Clear brilliant red. Prominent guard petals. Strong grower. 60c each; 3 for \$1.50.

★ **Festiva Maxima.** 9.3. *White.* Paper-white, crimson center markings. Very large. Best Southern variety. 60c each; 3 for \$1.50.

★ **Germaine Bigot.** *Pink.* Very large. Midseason. Regal in splendor. 50c each; 3 for \$1.35.

★ **Karl Rosenfeld.** 8.8. *Red.* Pure, rich, intense crimson of half rose type. Superb substance. 60c each; 3 for \$1.50.

★ **La Fee (The Fairy).** *Rose-white.* Crown type. Early. Large; mauve-rose with creamy white collar. 70c each; 3 for \$1.85.

★ **Lord Kitchener.** *Red.* Bomb-type flowers of cherry-red. Mid-season. 85c each; 3 for \$2.25.

★ **Mme. Ducei.** *Pink.* Bomb type. Pink with silver reflex. Very large and strong grower. 60c each; 3 for \$1.50.

★ **Mme. Jules Dessert.** *Flesh-pink.* Large semi-rose type. Delicate flesh shading to paler tones. 60c each; 3 for \$1.50.

★ **Mons. Jules Elie.** 9.2. *Pink.* Early bomb type. King of all Peonies. Lilac-pink with silver sheen. 50c each; 3 for \$1.35.

★ **Officinalis Rubra.** *Crimson-red.* One of the richest double crimson-reds. Quite vigorous and very early. 70c each; 3 for \$1.85.

★ **President Roosevelt.** 7.7. *Red.* Semi-rose type. Rich, deep, brilliant red. A grand Peony. 50c each; 3 for \$1.35.

★ **Umbellata Rosea.** *Pink.* Large and quite early. Rose type with salmon and pink tints. 50c each; 3 for \$1.35.

## Flowers for Victory Gardens

Keeping the home well planted and attractive is part of the Victory Garden program. Plant vegetables also, wherever they may be economically grown. Fruit trees, berries and grapes can well be planted in most yards. Now is the time to start them.

Hardy perennials, usually lasting for years, are a permanent investment. They increase in growth, flowers and value each year. It pays well to select the best varieties and start with good, healthy plants in carefully prepared soil. Depend on Hastings for Garden Victory and a Victory Garden.



Peony, Felix Crousse. 60c each; 3 for \$1.50



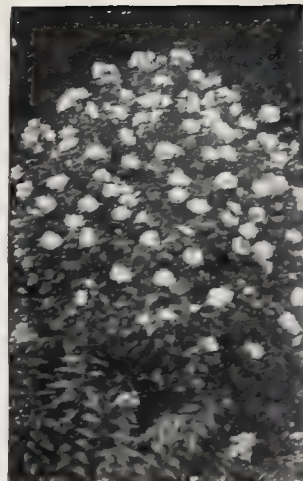
Viburnum—Snowball  
75c. Page 15



Hydrangea, Peegee  
50c. Page 15



Mock Orange  
40c. Page 15



Althea—Rose of Sharon  
40c



Almond, Double Pink  
50c

All Prices of shrubs on this page include Prepaid Delivery.

### Abelia

**Glossy Abelia.** *A. grandiflora.* 6 ft. Described on page 21. Excellent for shade or sun, all soils. Delivered—Strong plants, 40c each; 3 for \$1.00; 12 for \$3.50.

### Almond

**Double Pink.** *Amygdalus.* Rather dwarf, compact shrub with slender branches completely covered with double light pink flowers in early spring before leaves appear. Delivered—Strong plants, 50c each; 3 for \$1.25.

### Althea

Rose of Sharon; *Hibiscus syriacus.* Tall shrubs for city or congested conditions; also for hedges, screens, tall borders. Beautiful large blooms, at times almost covering the plant and a continuous bloomer all summer. Plant strong, vigorous and does well in almost any soil.

**Ardens.** Beautiful double blue-violet.

**Compte de Hainault.** Double; flesh.

**Duchesse de Brabant.** Double; red.

**Jeanne d'Arc.** Double; pure white.

**Lady Stanley.** Semi-double; light pink, splashed with carmine.

Each, heavy 2-yr. plants, 40c each; any 3 for \$1.00. 3 to 4 ft., 60c each; 3 for \$1.50.

**SPECIAL:** One 2-yr. plant each of all 5 varieties of Altheas delivered for \$1.45.

### Beauty Bush

*Kolkwitzia amabilis.* Newest, most beautiful flowering shrub for everybody with a home. Exceedingly handsome hardy ornamental from the wilds of China that grows 6 to 8 ft. high. It has long, arching branches, year-round beauty, an amazing profusion of light pink bell-shaped flowers in May and June. Clouds of flowers after 4 or 5 years old. Delivered—Strong plants, 60c each; 3 for \$1.50. Extra-heavy plants, \$1.00 each.

### Barberry

**Japanese.** *Berberis thunbergi.* Dwarf, bushy habit. Numerous small leaves densely cover the thorny twigs. Makes a compact, impassable, hardy hedge, important for shrubbery groups. Autumn paints the foliage and fills the branches with scarlet berries. Delivered—2-yr. plants, 40c each; 3 for \$1.00.

**Red-leaved.** *B. thunbergi atropurpurea.* Similar to Japanese except with deep bronzy red foliage, getting more brilliant with summer sun. Plant in full sun for richest red foliage. Heavy plants, 60c each; 3 for \$1.50.

### Beautyberry · Callicarpa

*C. purpurea.* For borders and clumps. Grows 3 to 5 ft. high, with graceful, recurving branches covered in August with tiny pink-tinted flowers, followed by masses of violet-purple berries until midwinter. Delivered—Heavy plants, 40c each; 3 for \$1.00.

### Calycanthus · Sweet Shrub

*C. floridus.* Native shrub, 4 to 5 ft., thriving in shady locations. Dark green, aromatic foliage and rich chocolate-colored, extremely fragrant double flowers in early April. Delivered—Heavy plants, 40c each; 3 for \$1.

### Chaste Tree · Blue Vitex

*V. agnus castus.* Large decorative shrub or small tree with strong aromatic odor. Exquisite blue flower-spikes are borne in midsummer. Leaves are deeply cut to star shape. Delivered—Heavy plants, 40c each; 3 for \$1.

### Chionanthus

White Fringe Tree; Granddaddy's Gray Beard. *C. virginica.* Choice lawn tree with large, dark green, glossy foliage and many showy 6-8-in. panicles of pure white, feathery flowers in May and June. Delivered—Strong plants, 60c each; 3 for \$1.50.

### Chokeberry

*Aronia arbutifolia.* Ornamental shrub with red fruit in fall and winter. Delivered—Strong plants, 60c each; 3 for \$1.50.

### Coralberry

*Symphoricarpos vulgaris.* Similar to Snowberry except the smaller berries are coral-red, almost purple, and cluster in thick ropes along stems. The foliage is small and dark. Delivered—Heavy plants, 40c each; 3 for \$1.

### GRAPE MYRTLE

*Lagerstræmia indica.* Favorite flowering shrub of the South. A heavy bloomer growing 10 to 15 feet high. Splendid for lawn specimens and gorgeous street plantings. It is difficult to transplant. Plants often remain dormant the first summer and some few never start growth. Prune severely on planting, water and cultivate carefully. Pack good soil, with no green manure, firmly about roots. Worth the hazard. **Watermelon-Red, Pink, and White.** Delivered—Medium-sized plants, 50c each; 3 for \$1.25. Large plants, 75c each. 3 to 4 ft., strong branched, \$1.25 each. Any color.

**NEW DIXIE BRILLIANT GRAPE MYRTLE.** Marvelous new richer, deeper watermelon-red and very prolific variety. (See Page 17.) Delivered—79c each; 3 for \$1.79; 5 for \$2.79; 10 for \$4.79; 25 for \$10.79.

### Deutzias

Popular shrubs with dainty bell- or tassel-shaped flowers in heavy wreaths along their branches in early spring and summer. Plant in full sunlight with good drainage.

**Pride of Rochester.** Large, double, pinkish white blooms in June. 6 to 9 ft. Delivered—Strong plants, 40c each; 3 for \$1.00. Extra-strong, 60c each; 3 for \$1.50.

**Slender Deutzia.** *D. gracilis.* Dense, bushy plant with pure white flowers on drooping branches in April. 2 to 3 ft. Delivered—Strong plants, 60c each.

### FORSYTHIA

Golden Bells. One of the best shrubs for the South. Stands heat, drought, and partial shade. Flowers are golden yellow, bell-shaped and bloom profusely in February and March, when flowers are scarce. 6 to 10 ft.

**Fortune.** *F. fortunei.* Upright, prolific bloomer. Golden yellow blossoms cover arching branches before leaves appear—grand. Delivered—Heavy plants, 40c each; 3 for \$1. 3 to 4 ft., 60c each; 3 for \$1.50.

**Greenstem.** *F. viridissima.* Our best Southern variety. Stems and foliage bright green. Twisted golden yellow flowers in profusion during February and March. 6 to 8 ft. Delivered—Heavy plants, 40c each; 3 for \$1. 3 to 4 ft., 60c each; 3 for \$1.50.

**Weeping.** *F. suspensa.* Most useful and popular kind. Long, pendulous shoots with bright yellow flowers along green stems. Holds steep banks and will train on wall. Delivered—Heavy plants, 40c each; 3 for \$1. 3 to 4 ft., 60c each; 3 for \$1.50.

### Goldflower

Golden St. Johnswort. *H. pericum moserianum.* Dwarf shrub, 1 ft. Beautiful foliage. The clear waxy yellow flowers all summer resemble single roses. Fine for massing or planting in front of shrubbery. Delivered—Strong plants, 60c each.

### Halesia · Silver-Bell

Great Silver-Bell. *H. carolina.* Attractive deciduous shrub or tree with white, bell-shaped drooping flowers in clusters. 40 ft. Delivered—Strong plants, 75c each; 3 for \$2.00.

### Hamamelis · Witch Hazel

*H. virginica.* Ornamental woody shrub for general planting in Southern yards. Handsome foliage is brightly colored in fall, followed by bright yellow flowers in very late fall or early winter. Delivered—Heavy plants, 40c each; 3 for \$1.



## Bush Honeysuckles

**Japanese.** *Lonicera morrowi*. 4 to 6 ft. Dark green foliage. Spreading branches covered in early spring with white flowers which turn to shades of yellow, followed by small fruits or berries from June to August. Thrives most anywhere.

Delivered—40c each; 3 for \$1.00; 10 for \$3.00. 3 to 4 ft., 75c each; 3 for \$2.00.

**Tatarian.** *L. tatarica*. Beautiful bushy shrub, 8 to 10 ft. high, with wide spread. Simply covered with flowers during late spring and summer, followed by orange berries in late summer. 40c each; 3 for \$1.00; 10 for \$3.00. 3 to 4 ft., 75c each; 3 for \$2.00.

**Winter.** *L. fragrantissima*. During January and February, when flowers are scarce, it is covered with intensely fragrant, creamy white blooms to delight the neighborhood. Strong-growing, rounded shrub with evergreen foliage in the South.

Delivered—40c each; 3 for \$1.00; 10 for \$3.00. 3 to 4 ft., 60c each; 3 for \$1.50.

## HYDRANGEAS

About the most showy plants in cultivation. They transplant easily, have no diseases and bloom through the summer when flowers are scarce. Plant in masses, hedges and foundations. Prefer moist, fertile, well-drained soil. (See our Spring Catalog for Blue Hydrangea.)

**Hills of Snow.** Summer Snowball. *H. arborescens grandiflora*. Shrub 3 to 4 ft. high, with large rich green leaves and huge white heads of flowers. Blooms almost all summer—a gorgeous display. Some claim it is the greatest shrub in existence.

Delivered—Strong plants, 50c ea.; 3 for \$1.25.

**Oakleaf.** *H. quercifolia*. Strong shrub, 5 to 6 ft. high, bushy, with large, pointed, oakleaf-shaped leaves. Flower panicles of pink and white turn purplish. Delivered—Strong plants, 60c each; 3 for \$1.50.

**Peegee.** Hardy Hydrangea. *H. paniculata grandiflora*. 4 to 5 ft. Huge white cone-shaped panicles of bloom from midsummer until fall, on gently arching stems over large rich green leaves. The great favorite.

Delivered—Strong plants, 50c ea.; 3 for \$1.25. Extra-strong plants, 75c each; 3 for \$2.00.

## Jasmine

**Florida.** *Jasminum floridum*. Vigorously growing spreading shrub with rather large primrose-yellow blooms in summer.

Strong plants, 50c each; 3 for \$1.25.

**January.** Winter Jasmine. *J. nudiflorum*. Graceful, spreading, semi-trailing shrub. Bright rich yellow, trumpet-shaped flowers in January and February.

Delivered—Strong plants, 50c ea.; 3 for \$1.25.

**Italian.** *J. humile*. Perfectly hardy, with arching bright green branches and clusters of bright yellow, tubular flowers in summer. Likes moist, loamy soils and sunshine. Delivered—Strong plants, 75c each; 3 for \$2.00.

**Pink.** *J. stephanense*. Semi-trailing hybrid Jasmine with fragrant, pale pink flowers in clusters in spring. Delivered—Strong plants, 75c each; 3 for \$2.00.

## Kerria · Japanese Rose

Double Globeflower. *K. japonica flore-plena*. Attractive and graceful shrub, 6 to 8 ft. tall, for foundations and screens. Arching green branches and rose-like leaves. Rich yellow globe-shaped flowers resembling Lady Banksia roses in summer. Delivered—Strong plants, 60c each; 3 for \$1.50.

## Meratia · Wintersweet

*M. praecox*. Moderate-growing deciduous shrub producing an abundance of intensely fragrant yellow flowers along the stems in midwinter. Hardy.

Delivered—Strong plants, 75c each. Extra-strong plants, \$1.00 each.

## LILACS

*Syringa*. Our fragrant old favorites. They grow about 8 feet tall, are nicely shaped and give us a wealth of beautiful bloom in long, cone-shaped heads or spikes about April.

**Purple.** *S. vulgaris*. The common old-fashioned purple variety, familiar Lilac of our grandmothers' gardens. Hardest and easiest grower. Prices same as White Lilac below.

**White.** *S. vulgaris alba*. The old-fashioned Lilac that everybody knows. Delightfully fragrant. Delivered—Medium size, 60c each.

**Persian.** *S. rothomagensis*. Better adapted to Southern climate than *S. vulgaris*. Large, loose panicles of lovely fragrant lilac-colored blooms. Delivered—50c each; 3 for \$1.25.

## Pearl Bush

*Exochorda grandiflora*. 8 to 10 ft. high with richest waxy white flowers completely covering the shrub in early spring. Plant for its beautiful mass effect.

Delivered—Strong plants, 40c each; 3 for \$1.

## Flowering Pomegranate

*Punica granatum rubra*. Shiny leaved, bushy shrub, 6 to 8 ft., double 1 to 1½-in. orange-red flowers in profusion from May through the summer. Hardy to about 15 degrees; protect in severe freezing weather.

Delivered—Strong plants, 50c ea.; 3 for \$1.25.

## Purple-leaf Plum

*Prunus pissardi*. Quick-growing, ornamental specimen for lawn or heavy plantings. Purple foliage. Delivered—Strong plants, 75c each; 3 for \$2.00.

## Flowering Quince

Japanese Quince. *Cydonia japonica*. Beautiful cut-flower as well as for garden effect. Slow-growing shrub, making an impassable flowering hedge. Attractive in spring, blooming in great flame-colored masses just as the glossy leaves are coming out. 4 to 8 ft. tall.

Delivered—Strong plants, 40c each; 3 for \$1.

White Flowering Quince. \$1.00 each.

## Scotch Broom

*Cytisus scoparius*; *Genista*. A profusion of rich, deep yellow, artistic pea-like flowers are borne singly along the rich green branches in April and May. Beautiful shrub. Delivered—Medium-size plants, 50c each; 3 for \$1.25.

## Snowberry

*Symphoricarpos racemosus*. Attractive 4 to 5-ft. shrub bearing small rose-pink flowers in June and July, followed by large-clustered, milk-white berries until winter.

Delivered—Heavy plants, 50c each.

## Sourwood

*Oxydendron arboreum*. Ornamental shrub or tree with panicles of white flowers in summer and handsome foliage turning brilliant scarlet in autumn. Delivered—Heavy plants, 60c each; 3 for \$1.50.

## Mock Orange · Philadelphus

**Coronarius.** Fine upright form; vigorous-growing branches. Very fragrant, creamy white single blossoms.

Delivered—Heavy plants, 40c each; 3 for \$1. Extra-heavy plants, 60c each; 3 for \$1.50.

**Virginal.** Newer type. Largest (2½ in.) semi-double, sweet and snow-white. Longest blooming sort. Should be in all plantings.

Delivered—Heavy plants, 60c ea.; 3 for \$1.50.

## Tamarix · Salt Cedar

Slender, rather irregular, upright shrub or small tree to 12 ft., with feathery, graceful foliage and airy heads of pink flowers in profusion. Splendid florist and home-cutting material, as background plants, even as specimens. It thrives except with too much lime.

Delivered—Heavy plants, 75c each; 3 for \$2.

## EASILY GROWN SPIREAS

These shrubs are widely planted, do well in most soils and situations, are effective in borders, masses, and Van Houtte in specimen plants. They are the most popular deciduous shrubs that we grow. Doing wonderfully in the South in most any situation and enduring neglect, you cannot plant too many.

**Anthony Waterer.** Crimson Spirea. *S. bumalda*. Compact, low-growing shrub, 2 to 3 ft. high. Dense green foliage with leaves variegated pink and white on new growth. Rosy crimson flowers in wide, flat clusters on erect stems, through the summer. Valuable in front of other shrubbery or as a border. Delivered—Strong plants, 60c each; 3 for \$1.50.

**Billiard Pink.** *S. billiardi*. Grows to 6 ft., with dense spikes of bright rose-pink flowers crowning the erect, brown, hairy branches. Desirable for shrubbery groups, natural plantings, and moist places. Attractive bloom from June to September.

Delivered—Strong plants, 60c ea.; 3 for \$1.50.

**Blue Spirea.** *Caryopteris*. 60c each.

**Bridal Wreath.** Bridal Bower. *S. vanhouttei*. Most useful of all hardy shrubs. In full bloom in spring it is a mass of white flowers on spreading branches often drooping to the ground. It never fails to attract attention. Grows 6 to 8 ft. high and 20 ft. across.

Delivered—Heavy plants, 40c each; 3 for \$1. Extra heavy, 75c each; 3 for \$2.00.

**Double Bridal Wreath.** *S. prunifolia*. Similar to Bridal Wreath except flowers are fully double. Delivered—Extra heavy plants, 60c each; 3 for \$1.50.

**Snow Garland.** *S. thunbergi*. Extra-early-flowering Spirea, the pride of the Southland. Of spreading growth, its slender, arching branches are a perfect mass of miniature white flowers before the feathery foliage appears. 2½ to 4 ft. high, for foundations and edging. Delivered—Strong plants, 50c each; 3 for \$1.25.

## VIBURNUM · SNOWBALL

Hardy, tree-like shrubs with large snowball-like, showy white flowers. As specimen plants and for grouping it is gorgeous.

**Common Snowball.** *V. opulus sterile*. Covered in early spring with perfect balls of snowy white flowers. It is of easiest culture; reaches 10 to 12 ft. A beautiful sight. Delivered—Strong plants, 75c each; 3 for \$2.00.

**Japanese Snowball.** *V. tomentosum plicatum*. Its pure white ball form, against dark plaited leaves, makes it wonderful as a specimen or in groups. Blooms in spring and dominates the lawn. 6 to 8 ft. Delivered—Strong plants, 75c each; 3 for \$2.00.

## COLORFUL WEIGELAS

Diervillas. Beautiful April- and May-flowering shrubs. Grand for borders, grouping, and specimen plants in sun or partial shade. Flowers trumpet shaped, clustered thickly along the branches to almost hide the foliage. Flowers on new wood.

**Candida.** White. Most vigorous variety, growing 5 to 6 ft., and thriving in light soil. Flowers are snow-white, large and quite showy. Delivered—Strong plants, 75c each; 3 for \$2.00.

**Eva Rathke.** Red. Spreading shrub 3½ to 4 ft. high. Crimson flowers with white throats, especially showy in light soils, fine in partial shade. Delivered—Strong plants, 75c each; 3 for \$2.00.

**Rosea.** Rose-pink. Best of all. Abundant flowers along arching canes in May with scattering bloom all summer. 4 to 6 ft. Delivered—Strong plants, 40c each; 3 for \$1. Extra-strong plants, 60c each; 3 for \$1.50.

# SHOWY VINES AND CREEPERS

## Clematis

These hardy climbers are most valuable for training around and over pillars, rockwork, pergolas, arches or gateways.

**Jackman.** *C. jackmani*. Succeeding only in partial shade, this huge purplish violet flowered variety is simply beautiful. Very large, four-petaled flowers come in mid-summer, laid flatly against the rich foliage. (Not for Lower South planting.)  
Delivered—85c each; 3 for \$2.25.

**Sweet Autumn.** *C. paniculata*. Beautiful, luxuriant growth with delicate foliage. Blooms profusely in late summer and early fall in immense sheets of small white, sweet-scented flowers, followed by feathery seed clusters. Give support or grow on banks. Easiest Clematis to grow and makes the most showy flowering vine.  
Delivered—50c each; 3 for \$1.25.

## American Bittersweet

*Celastrus scandens*. Very ornamental vigorous vine for trellises, walls, banks or rockwork. Bright red berries last well through winter.  
Delivered—60c each; 3 for \$1.50.

## Coral Vine

Mountain Rose. *Antigonon leptopus*. Rather tender but vigorous growing and striking climber with racemes of loveliest clear rose flowers in summer and fall. For middle and lower South only. Orders booked for spring delivery only.  
Delivered—Tubers, 75c each; 3 for \$2.

## Honeysuckle

**Hall's Japan.** *Lonicera japonica baliana*. Rampant climber with dark evergreen foliage and intensely fragrant trumpet-shaped flowers of white, deepening to cream-yellow.  
Delivered—50c each; 3 for \$1.25.

**Scarlet.** Trumpet Honeysuckle. *L. sempervirens*. Attractive vine with blue-green foliage and showy coral-red or scarlet trumpet-shaped flowers followed by scarlet berries.  
Delivered—50c each; 3 for \$1.25.

## Silver Lace Vine

**Polygonum auberti**. One of the loveliest of strong growing, showy Southern vines. Covered with foamy sprays of white flowers in late summer.  
Delivered—75c each; 3 for \$2.00.



Coral Vine (*Antigonon leptopus*)  
Tubers, 75c each

## Ivy

**Boston.** Japanese Ivy. *Ampelopsis veitchii*. Greatest clinging vine. It covers immense surfaces in a short time after started and clings tightly to most anything that stands still. Broad, three-lobed, deep glossy green leaves in summer, turn gorgeous red, scarlet and yellow in autumn. Delivered—50c each; 3 for \$1.35; 12 for \$4.75.

**Virginia Creeper.** American Ivy. *A. quinquefolia*. Same growth except not so dense in foliage. It has five lobes to the glossy green leaves, giving it a more airy and open appearance. In autumn its brilliance of changing colors is beautiful. Delivered—50c each; 3 for \$1.35.

**English.** *Hedera helix*. The best evergreen for covering brick, concrete and stone walls or as a ground-cover. It grows in sun or dense shade. Rapid growing after established, with large, glossy, dark evergreen leaves. Delivered—3 for 65c; 12 for \$2.00.



The South's Evergreen English Ivy  
12 for \$2.00

## Vinca

**Minor.** Periwinkle. Evergreen ground-cover for shady or sunny places. Nice for rock walls, slopes, etc. Blue flowers. Delivered—6 for 75c; 12 for \$1.25; 100 for \$8.50.

## Wistaria

**Purple.** *Wistaria sinensis*. Rapid-growing vine with great drooping racemes of lilac-purple, pea-shaped flowers. When well established more bloom may be secured by pruning back the lateral shoots to short spurs. By grafting scions from fine blooming plants on strong seedling stocks we obtain sure-blooming plants. It will pay you to get these fine grafted plants. Delivered—75c each; 3 for \$2.00.

**White.** Grafted. Delivered—\$1.00 each; 3 for \$2.50.



Our Grafted Purple Wistaria. 75c

## BEST HEDGE PLANTS

**Prices** 50 or more plants of the same size and variety will be sold at the 100 price. Write for special prices on lots of 250 or more.

### Abelia

**Grandiflora.** Best hedge pruned or natural. Set plants 2 to 3 ft. apart. See page 21. F. O. B.—Rooted cuttings, \$10.00 per 100. Heavy young plants, bare roots puddled, \$20.00 per 100.

### Bamboo

**Timber.** *Phyllostachys*. Ideal for tall hedges, screens, and windbreaks. 25 to 40 ft. tall. F. O. B.—Clumps, \$1.00 each; 12 for \$10.00.

### Barberry

*Berberis thunbergii*. Valuable thorny hedge. See page 14. Set 1½ to 2½ ft. apart. F. O. B.—12 to 18 in., \$17.50 per 100.

### Boxwood

**Common.** *Buxus sempervirens*. Popular old-fashioned hedge; trims beautifully and fine natural growth. Set 6 to 12 in. apart. See page 21. F. O. B.—6-in. plants, puddled roots, \$12.50 per 100.

**True Dwarf.** *B. sempervirens suffruticosa*. Description on page 21. Extensively used for edging and low hedges. Grows 4 feet, but may be held to 6 in. Set 6 to 10 in. apart. F. O. B.—4-in. plants, roots puddled, \$15.00 per 100.

### Citrus - Hardy Orange

**Trifoliata.** Hardy Orange. Makes an impenetrable thorny hedge of good size. F. O. B.—12 to 18-in. plants, \$12.50 per 100.

### Privets

**Amur River South.** *Ligustrum amurense*. Can be trimmed and sheared in any shape. Dense, heavy growth, practically evergreen South. F. O. B.—12 to 24 in., \$5.00 per 100. 2 to 3 ft., \$6.50 per 100. Write for prices on other sizes.

**Japanese.** *L. japonicum*. Description on page 22. Large-leaved evergreen for tall hedges and back-grounds. Set 12 to 30 in. apart. F. O. B.—2 to 3 ft., bare roots, \$30.00 per 100.

# Dixie Brilliant

THE NEW SUPER  
EVERBLOOMING  
RED CRAPE  
MYRTLE



A brighter, richer, deeper-colored, more prolific and more beautiful Super everblooming Crape Myrtle.

Positively the finest Crape Myrtle yet developed.

NOT PATENTED • NO RESTRICTIONS

*Grow All the New Plants  
from Cuttings You Wish!*

**BOOK YOUR ORDER EARLY**

GUARANTEED TO BLOOM THE FIRST YEAR

Strong, well-rooted, well-branched field-grown plants. DELIVERED

|                        |                          |
|------------------------|--------------------------|
| 1 plant for . . \$0.79 | 10 plants for . . \$4.79 |
| 3 plants for . . 1.79  | 25 plants for . . 10.79  |
| 5 plants for . . 2.79  | 100 plants for . . 39.79 |

## NEWEST EVERBLOOMING BUTTERFLY BUSHES



New Buddleia, Dubonnet. 60c



New Buddleia, Orchid Beauty. 60c



Pink Buddleia, Charming. 60c



Buddleia, Royal Red. 75c

**Dubonnet.** Most exciting new introduction. Immense spikes of rich purplish wine-color. Distinctive all summer cut-flower. Delivered—60c each.

**New Pink, Charming.** Summer Lilac. Extremely new and fast-growing flowering shrub, with charming pink blooms on long, graceful stems from June until frost. Delivered—60c each.

**Royal Red.** Patent 556. New and best. Symmetrical, fragrant, brilliant reddish flowers. Flower-spikes often over 9 inches long and borne profusely. Delivered—Strong plants. 75c each.

**Orchid Beauty.** Splendid new variety of soft cattleya-lilac with brilliant orange eye. Bloom spikes exceptionally large. Delivered—Strong plants. 60c each.

Plant Buddleia in a rich, well-drained soil in sunny exposures. Prune frequently to force new growth to bear many flowers.

**All Four for \$2.25**  
(Value \$2.55)

One each of all 4 of these newest and finest everblooming summer beauties.

**Postpaid to you for only \$2.25**

# BEST EVERGREEN CONIFERS

## RETINOSPORA · CHAMAECYPARIS

The Chamæcyparis family includes the Retinospora and Cypress groups, which are similar. Plants are rather pyramidal, densely foliaged with fine leaves and some flattened like arborvitæ. They grow best in moist, well-drained soil in partial shade. May be kept small by spring pruning. Grand for lawns and small sizes for boxes and tubs. They are beautiful and easily handled except in the lower South where the heat tends to burn the foliage and often causes loss of the plant. For the lower South we recommend oriental (Orientalis) type of arborvitæ.

**Plume.** *C. pisifera plumosa*. One of the most pleasing and popular varieties, often called Plumed Cypress. It grows 15 to 20 ft. high, with somewhat pendulous branches. The bright grayish green, finely cut foliage has a plume-like, feathery appearance, quite similar to a finely cut fern frond. It succeeds in most situations and is often beautifully grown in tubs, porch-boxes, and urns. It makes a wonderful specimen when kept sheared and is very popular.

Mail size, \$1.00 each. Delivered.

**Golden Plume.** *C. pisifera plumosa aurea*. Rapid-growing, very graceful tree with rich golden green foliage arranged in billowy plumes. It grows about 15 ft. high, of pyramidal form and with somewhat drooping branches. The finely cut golden foliage makes it outstanding in appearance and it is especially valuable as a contrast in color to the dark green of most of the other evergreens in foundation and group plantings.

Mail size, \$1.00 each. Delivered.

**Lawson Cypress.** *C. lawsoniana*. A very graceful plant, 10 to 15 ft. high, broad at base, of erect habit, tapering to a point at the tip. Branches droop with glaucous tips. Under surface of foliage is silvery and upper surface is dark green. Prefers a dry, well-drained situation and makes a handsome specimen with its crowded, pendulous, fern-like and feathery branchlets from short, spreading branches. An ideal lawn specimen.

Mail size, \$1.00 each. Delivered.

**Veitch's Moss.** *C. pisifera squarrosa veitchii*. This is the most attractive conifer of them all. The soft, pleasing to touch, moss-like, dense, fluffy, very finely divided foliage of steel or silvery blue-green coloring is delightful. Extra fine for urns, boxes, tubs when kept sheared, and blends well yet gives variation to other greens in plantings.

Mail size, \$1.00 each. Delivered.

## CEDARS

The commonly called "Virginia Cedar" is a Juniper. See page 19. The true Cedars are particularly adapted to the South, hardy south of Ohio.

**Deodar or Indian.** *Cedrus deodara*. Pictured at left, this is considered the handsomest of all tall-growing conifers. Attains over 50 ft. in height, lower branches gracefully sweeping the ground. Foliage is feathery and of the popular blue-green color. Tree shape is pyramidal, growing more stately with age. Succeeds admirably in this climate. Magnificent.

Mail size, \$1.50 each. Delivered.

## Cunninghamia

**China Fir.** *C. lanceolata*. Unique and attractive evergreen coniferous tree, closely allied to cryptomeria. Stiff, sharp-pointed, flattened lance-like, 2½-in. leaves with broad white bands beneath. Inconspicuous flowers in terminal clusters are followed by 2-in. roundish cones with thick-pointed scales. Quite hardy in the South, growing to 50 ft. tall. Rapid, symmetrical grower with horizontal branches. Very interesting specimen tree; useful with other tall evergreen conifers in groupings, backgrounds, and screens. Its flat branches lend interest and variety the year around.

Mail size, \$1.50 each. Delivered.

## SPECIAL WAR NOTICE

Your Kind Consideration is Appreciated

Restricted, as we are, with labor and material shortages we cannot accept orders for any balled specimen shrubs for shipping. We will have our usual supply on display in our Atlanta retail store Nursery Department, whence they may be quickly taken and planted by the customer. Our landscape service is operating necessarily on a very restricted schedule in Atlanta vicinity only.



Golden Plume Retinospora. \$1.00

## SPRUCE

**Norway.** *Picea excelsa*. This white Spruce doesn't do as well here as North but is interesting for plantings with other evergreens. Retains its rich green in winter. It is a tall, evergreen tree of pyramidal form. Needle-like leaves, ¾ in. long, on rather drooping branchlets, are dark green and shiny. It has catkin-like flowers and drooping cones to 7 in. long.

Mail size, \$1.00 each. Delivered.

## HOW TO PLANT EVERGREENS



1 DIG HOLE A FOOT LARGER AND DEEPER THAN BALL OF EARTH. PROVIDE GOOD LOAMY TOP SOIL TO FILL AROUND BALL.



3 FILL GOOD TOP SOIL UP AROUND BALL. PACK FIRMLY WITH FEET OR SETTLE BY FILLING HOLE WITH WATER.

2 SET TREE IN HOLE TRIFLE LOWER THAN IT STOOD IN NURSERY

4 LOOSEN BURLAP AT TOP OF BALL AND ROLL BACK OR CUT OFF

5 FILL HOLE WITH SOIL. PACK FIRMLY AND LEAVE TOP OF GROUND COVERED WITH LOOSE EARTH OR BETTER MULCH WITH STRAWY WELL ROTTED MANURE.

HGH  
©



Indian Cedar (*Cedrus deodara*). \$1.50

# SOUTHERN JUNIPERS

## MOST HEAT-RESISTANT OF ALL

The Junipers are in a class by themselves as evergreens of high quality, brilliant coloring and wide range of form and manner of growth. Silver-green, blue-green and deep green types; low, spreading shapes, upright cones and pyramidal shapes offer a great variety from which to choose. All are hardy and long-lived.

**Ashford.** *Juniperus communis ashfordi*. Tall, columnar growth and very resistant to adverse conditions. Similar to Irish Juniper except softer in appearance. Very pleasing soft silvery green, medium-length needles and unusually well suited to our climate. Special mail size, \$1.00 each. Delivered.

**English.** Common Juniper. *J. communis*. Grows 15 to 20 ft. tall; lends itself admirably to formal uses as a specimen, for use in pairs, for foundation plantings and in groups. Its feathery looking foliage is a beautiful silvery blue color. Not so slender as the Irish.

Special mail size, \$1.00 each. Delivered.

**Irish.** *J. communis hibernica*. Grows 15 to 20 ft. tall. Slender, erect, dense columnar growth and with very rich sage-green foliage. Leaves are small and compact, with ends of twigs held upright. This most slender Juniper is very valuable for formal effects, for end use in foundations, mass plantings, corner or entrance markers.

Special mail size, \$1.00 each. Delivered.

**Pfitzer.** *J. chinensis pfitzeriana*. Very handsome, and the most popular of all spreading types. The branches are long and densely furnished with very dark green foliage. This gray-green color is held in winter and is beautiful in its flowing lines, so desired in landscaping. Withstands severest pruning if it outgrows its location. Fine for edging larger plantings, for banks and as entrance markers.

Mail size, \$1.00 each; 3 for \$2.50. Delivered.



Pfitzer Juniper. \$1.00

**Spiny Greek.** *J. excelsa stricta*. Very ornamental and conical in shape, well branched and densely clothed with grayish blue-green foliage, which is arranged around the branches. Distinct species of great beauty. Special mail size, \$1.00 each. Delivered.

**Swedish.** *J. communis suecica*. Tall, columnar form with larger leaves than the Irish and the tips of branches bend outward, as shown in the picture. The glaucous green color is lighter and more blue than Irish Juniper, in fact, more beautiful. Splendid for formal effects. Slender, over 15 ft. tall ultimately, and easily grown in most soils and situations. Valuable in grouping, for specimens, and in pairs for marking driveway entrances, porch entrances, etc. Odd, distinct and attracts attention.

Special mail size, \$1.00 each. Delivered.

### VITAMIN B<sub>1</sub> FOR PLANTS

Great discovery that has produced almost miraculous results in transplanting plants, shrubs, and trees of practically all kinds. Invigorates the rooting systems of old as well as new plantings. Be sure to use it and insure better success. Special trial box of 10 Pellets 25c. 100 Pellets (season's supply) \$1.00. Postpaid. Full directions included.



Swedish Juniper. \$1.00

### VIRGINIA CEDARS

**Virginia Blue Cedar.** *J. virginiana glauca*. A rare and striking variety of our common Virginia Cedar with the most intense blue foliage. Compact, uniform and symmetrical growth; columnar form, retaining its branches close to the ground. Grows over 25 ft. high and succeeds in almost any soil and situation. The native Virginia Cedars are Junipers instead of Cedars. Lanes and avenues leading to many of our famous old Southern homesteads are lined with the old Red Cedars, and there is a majesty about them that would be difficult to obtain with any other conifer. Reds are still worthy but not to compare with the striking Blue Cedar, which has more compact, even and beautiful shape as well as its lustrous blue-green foliage.

Special mail size, \$1.00 each. Delivered.

### FOR THE DURATION

We regret that due to labor and material shortages and transportation delays, we must forego supplying specimen shrubs for shipping. We feel that you will cooperate with us in relieving that much load on the carriers. We suggest the use of the mail-size plants that are economical and even much more safely transplanted. Thank you!



*Taxus cuspidata*. See page 20



Irish Juniper. \$1.00

# ARBORVITAE • THUJA

Well-known shrubs for specimens, groups, hedges, urns, and foundations. The American type (*T. occidentalis*) is of open growth with short, horizontal, flat-pressed branches and pleasant fragrance. The Oriental or Chinese type (*T. orientalis*) is more compact with flattened, upright branches and better adapted South, standing sun, heat and drought. Use only *Orientalis* kinds in lower South.

**American Pyramidal.** *T. occidentalis pyramidalis*. Upright, spire-like with light green foliage. Tall, formal appearance for urns and outdoors, usually used in pairs or for center plants. Special mail size, \$1.00 each. Delivered.

**Oriental Pyramidal.** *T. orientalis pyramidalis*. Its spire shape is held without shearing. Foliage vivid green. Useful for formal effects in urns, tubs, and general planting. Admirably adapted South. Special mail size, \$1.00 each. Delivered.

**American Globe.** *T. occidentalis globosa*. Compact, globe shaped, 3 to 4 ft. high with equal width. Retains its light green color, except in winter. Used as specimens in urns, boxes, tubs and front-row plantings. Special mail size, \$1.00 each. Delivered.

**Bonita.** *T. orientalis Bonita*. Similar to Dwarf Golden except foliage is bright, rich green with no golden tinge. Special mail size, \$1.00 each. Delivered.

**Oriental.** Chinese Arborvitae. *T. orientalis*. Rather low, broadly pyramidal or bushy. Foliage bright green, held well in winter. Rapid grower for mass effect, specimen, or hedges. Shears well, which makes it compact. Mail size, 60c each. Delivered.

**Dwarf Golden.** Berckman's Golden. *T. orientalis aurea nana*. Most desirable dwarf conifer and popular for urns, tubs, boxes, and general plantings. Very compact, rounded cone shape. Foliage bright green, deepening to bright golden green. Special mail size, \$1.00 each. Delivered.

**Goldspire.** *T. orientalis aurea conspicua*. Compact, erect, pointed tree, 15 to 20 ft. tall, retaining its branches near the ground. Foliage is deep golden yellow, artistic for specimens or groups. Easily grown in most soils and situations. Special mail size, \$1.00 each. Delivered.



Berckman's Golden Arborvitae

## HASTINGS' EVERGREENS

Depend on Hastings for all your planting needs. Know you are planting right and dealing with the most reliable nurserymen-seedsmen. That self-satisfaction is worth a lot. When the job is finished, you have a planting to be proud of and you find it has actually cost you less than when a planting is done haphazardly.

### TAXUS • Japanese Yew

**Taxus cuspidata.** Very dark green conifer evergreen for city plantings where many kinds fail. In upper South Japanese Yew is a charming plant to use where dwarf growth is desired. See picture, page 19. Special mail size, \$1.50 each. Delivered.

### TSUGA • Hemlock

**Tsuga canadensis.** Beautifully shaped deep green tree for lawn specimen, background or may be trimmed severely into shapes as for hedges. Fast displacing *Cedrus deodara* in upper South. Special mail size, \$1.00 each. Delivered.



Veitch's Moss Retinospora. See page 18

## NO SHIPMENT OF BALLED EVERGREENS

For the duration we cannot accept orders for shipment of any balled specimen shrubs of any kind. Labor and crating materials are critically short and transportation lines are already overloaded with more essential shipments. We will have nice specimen plants on display at our Atlanta city store, nursery department, throughout the transplanting season. Should you live in or visit Atlanta, we will gladly show you our selections which can be quickly carried home and planted with a minimum delay. Our landscape service will continue to operate on a very limited basis in the Atlanta vicinity only.

Let's all cooperate by maintaining our lawn, shrubs, trees and roses with minimum replacements that can be sent by mail—by keeping our food production up in our Victory Gardens—and by buying War Bonds to the utmost for an early Victory!



Pyramidal Arborvitae



Goldspire Arborvitae



Plume Retinospora. See page 18

# BROAD-LEAVED EVERGREENS

## CAMELLIA JAPONICA

Loveliest of all evergreens for the warmer sections of the South and farther North with protection. Very broad, dark green leaves with gorgeous wax-like flowers in late winter, literally covering the plants. Well-rooted mailing-size plants.

**Double Red**  
**Double White**

**Double Pink**  
**Double Variegated**

Your Choice, \$1.00 each; 12 for \$10.00. Delivered  
SPECIAL: One each of all 4 colors for \$3.50. Delivered

Camellia japonica—  
Loveliest of Flowers. \$1.00



## HARDY AZALEA COLLECTION

Richest, most colorful of all spring-blooming shrubs are the Azaleas. The Japanese sorts are hardy, compact growers, blanketed with bloom. Give partial shade and acid or woody soil.

**Hinodegiri.** Blazing red flowers. **Pink Pearl.** Charming double salmon.  
**Snow.** Loveliest double white. **Coral Bells.** Soft shell-pink; double.

Your choice, \$1.00 each; any 12 for \$9.75. Delivered

Also Bridesmaid, Daybreak, Flame, Hinomayo, Lavender Queen, Peachblow, and Salmon Queen at the same prices

COLLECTION OFFER: One each of any 4 for \$3.35. Delivered.

## FINEST INDIAN AZALEAS

Not quite as hardy as the Japanese but will stand with some protection in most sections of the South. Vigorous growers. Immense flowers. Very colorful.

**Dixie.** Hardy. Salmon-red. **Pride of Mobile.** Watermelon-pink. **Pres. Clays.** Flame-red.  
**Formosa.** Purplish pink. **Wm. Bull.** Double. Red. **Alba.** Pure white.

Your choice, \$1.00 each; any 4 for \$3.45; any 12 for \$9.95. Delivered

## ABELIA

**Glossy.** *A. grandiflora.* The Everblooming Evergreen. Most valuable Southern plant. It's an everblooming evergreen in the South, 5 to 6 ft. high unless kept trimmed. Pinkish white bell or tubular flowers from spring until frost on gracefully arching branches. Leaves are small, glossy rich green, turning purplish bronze with metallic sheen in winter. Excellent for specimens, hedges, groupings, foundations and the flowering branches for house decoration. Thoroughly satisfactory.

Mailing-size plants, 40c each; 3 for \$1.00; 12 for \$3.50. Delivered.



Blazing Red Hardy Azalea Hinodegiri. \$1.00

## AUCUBA

**Golddust.** *A. japonica variegata.* Best and broadest leaved evergreen for shady places. Grows 4 to 5 ft. high. Dark green leaves with striking yellow spots and flakes and flaming red berries in fall and winter. Give moist, shady location or among other shrubs for shade. For foundation and porch plants.

Mailing size, \$1.00 each. Delivered.

**Greenleaf.** *A. japonica.* Price as above.

## COTONEASTER

**Franchet.** *C. francheti.* Upright shrub with arching branches. Artistic clusters in spring and rich orange-red fruits in winter.

Mailing size, \$1.00. Delivered.

**Rock.** *C. horizontalis.* Low spreading evergreen shrub with dark green leaves. Inconspicuous flowers in early summer; bright red berries in fall.

Mailing size, \$1.00. Delivered.

## ELAEAGNUS

**Pungens fruitlandi.** Great wide-spreading broadleaf evergreen shrub, quickly reaching 6 ft. or more, with handsome, silvery, gray-green foliage. Inconspicuous flowers are followed by red berries. Rapid growing in sun or shade.

Mailing size, \$1.00. Delivered.

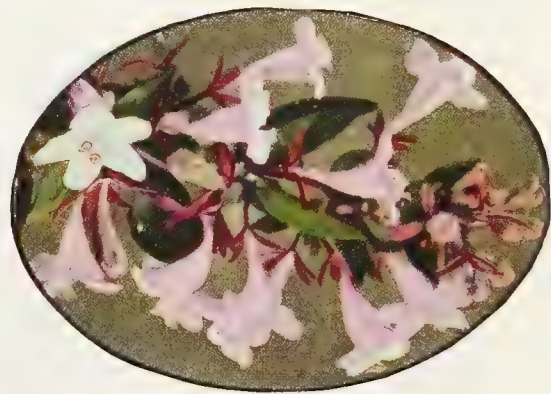
## EVERGREEN BARBERRY

**Sargent's.** *Berberis sargentiana.* A very attractive though thorny, low-growing evergreen for full sun or partial shade. Leaves dark green, long and slender. Very handsome. Mailing size, \$1.00. Delivered.

## BOXWOOD

**Common Box.** *Buxus sempervirens.* For old-fashioned hedges and beautiful specimen plants. Leaves are small, rich dark glossy green and cover the whole plant in a dense and compact, wide pyramidal form. Slow grower to over 10 ft. with an equal spread. It may be pruned to any shape. The Box of Colonial gardens, famous and treasured wherever architecture is in keeping with the landscaping. It increases in value yearly. See prices on page 16.

**True Dwarf Box.** *B. sempervirens suffruticosa.* Used for low hedges, edging, boxes, and urns. Dwarf, compact, extremely slow-growing, reaching 4 ft. It may be pruned to any shape or low height and kept the same for many years. Small leaves are lustrous green. Intricate designs in boxwood gardens and edging to formal beds and borders, are best carried out with Dwarf Box. It becomes extremely valuable with age. See prices on page 16.



Everblooming Abelia. 40c



Cotoneaster francheti. \$1.00 Page 21

## Plant GARDENIAS for Lasting Beauty

Gardenias are the sweetest and most beautiful of all broadleaf evergreens and should be in every home planting in the South. They are reasonably hardy.

### The South's New Everblooming Gardenia—50c

**Gardenia fortunei.** Sensational Cape Jasmine discovery, blooming heavily in early summer with perfect flowers and repeating from time to time all season until frost. Reasonably hardy. Only limited supply, so order early. Mail size, strong plants delivered—50c each; 5 for \$2.25; 10 for \$3.95. Extra heavy size delivered—\$1.00 each; 3 for \$2.50.

**Dwarf Cape Jasmine.** *G. stricta nana.* A miniature counterpart of our well-known Cape Jasmine with low, dwarf growth, small dark green, glossy leaves, and deliciously fragrant miniature true Gardenia flowers borne in early summer. Mail size, 75c each. Delivered.

## SOUTHERN EUONYMUS

**Siebold Burningbush.** *E. patens.* Does well in almost any situation. Very ornamental, of easy culture, standing sun or shade. Glossy, leathery, bright green foliage and bright red winter berries. Compact, graceful shrub, practically evergreen, spreading or climbing against wall or tree. Free of insects and disease. Heavy mail size, \$1.00 each. Delivered.

## SOUTHERN MAGNOLIA

*M. grandiflora.* Lawn tree of great beauty, thriving in moist, porous soils and liking fertility. Leaves large, thick, waxy, dark evergreen. Flowers very large, highly perfumed, and pure white, followed by scarlet seed in cones. Delivered—Heavy plants, \$1.25 each. Extra heavy plants, \$2.00 each.

## MAHONIA FOR SHADE

**Leatherleaf Hollygrape.** *M. bealei.* Large compound leaves of 7 to 15 holly-like, spiny toothed leaflets of bright shiny green; tough and leathery. Terminal clusters of yellow, bell-shaped flowers in February, followed by clusters of violet berries, similar to small grapes. For foundations and groups in shade. 5 ft. Heavy mail size, \$1.00 each. Delivered.

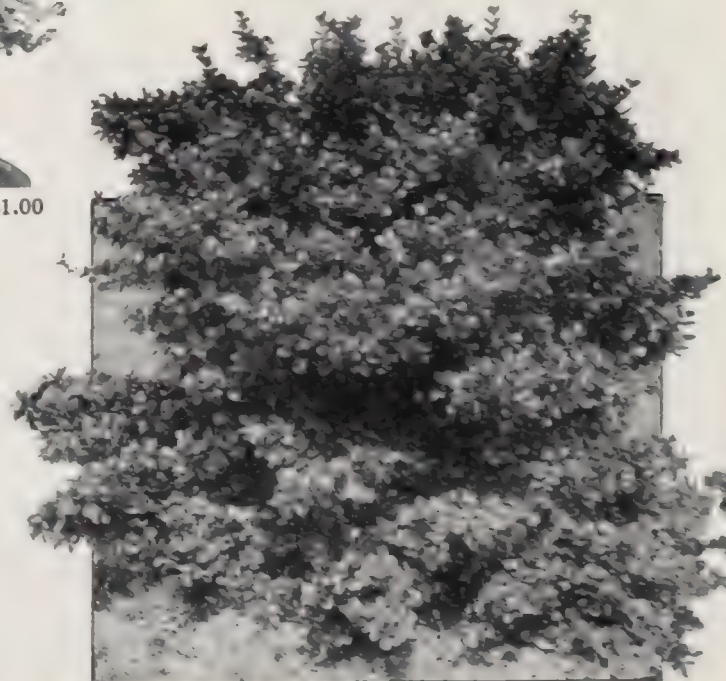
## NANDINA FOR BERRIES

**Domestica.** Heavenly Bamboo. Beautiful leafy shrub of medium height, 3 to 4 ft., and of a neat and airy appearance. Has the appearance of dwarf evergreen bamboo. Foliage is lighter green than other evergreens; leaves pink tipped in summer and rich bronzy red in winter. Flaming scarlet berries through the winter with rich red leaves. Especially desirable for foregrounds of foundation and border plantings to relieve the heaviness.

Mail size, 50c each; 3 for \$1.25. Delivered.



American Holly. \$1.00



Euonymus patens—Siebold Burningbush. \$1.00

## HOLLIES for the South

**American.** *Ilex opaca.* Our native Holly, with large, glossy, prickly leaves and beautiful red berries. It can be sheared or left to develop a tree. Many produce red berries. Typical of Christmas.

Mail size, \$1.00 each. Delivered.

**Burford Chinese.** *I. cornuta burfordi.* Broad, 9 to 15-ft. shrub, hardy in the South. Leaves have one strong spine at tips and of deepest glossy green. Large shining red berries. Handsomest of all broadleaf evergreens and finest of all Hollies.

Mail size, \$1.00 each. Delivered.

**Japanese.** *I. crenata.* Evergreen shrub to 15 ft. Wavy toothed, oval leaves and black berries.

Mail size, \$1.00 each. Delivered.

**Yaupon.** *I. vomitoria.* Spreading evergreen shrub with small oval or oblong leaves. Produces small red berries abundantly for winter effect.

Mail size, \$1.00 each. Delivered.

## LAURELS ARE VIGOROUS

**Carolina Cherry.** *Laurocerasus caroliniana.* Bright green, glossy foliage. Natural pyramidal form for specimens and groups.

Mail size, 40c each; 3 for \$1.00; 12 for \$3.00. Delivered.

**English.** *L. officinalis.* Grows 15 ft., but may be kept trimmed. Spreading shrub with broad, shining, rich green foliage. For foundation and specimen plants.

Mail size, \$1.00 each. Delivered.

## EVERGREEN LIGUSTRUM · PRIVET

**Glossy.** *L. lucidum.* Best dwarf, large-leaved evergreen shrub. Leaves thick and dark shining green, making compact, dense growth. Fragrant white flowers in spring are followed by blue-black berries through the winter. Hardy south of Ohio River. For foundation plantings, hedges and specimens.

Mail size, 75c each; 3 for \$2.00. Delivered.

**Japanese.** *L. japonicum.* Upright shrub, quickly attaining 15 ft., with large, glossy, dark green leaves. For tall hedges, screens, foundations and grouping.

Mail size, 40c each; 3 for \$1.00; 12 for \$3.00. Delivered.





Gardenia, or Cape Jasmine. 50c Page 22

## OSMANTHUS

**Tea Olive.** *O. aquifolium*. Japanese evergreen shrubby tree, 20 ft. high. Fragrant white flower clusters in spring. Holly-like, oval, spiny-toothed leaves. Prefers rich soil and partial shade. Mail size, \$1.00 each. Delivered.

**Fragrant Tea Olive.** *O. fragrans*. Lovely evergreen of moderate growth having clusters of small, very fragrant white flowers during the fall months. Mail size, \$1.00 each. Delivered.

**Fortune Olive.** *O. fortunei*. Beautiful 6-ft. evergreen shrub, hardy in the South. Holly-like leaves, 4 in. long. Fragrant white flower clusters in spring. Stands shade, is thrifty, holds its deep green color in drought; a luxuriant plant. Fine for specimens, grouping, borders and hedges. Mail size, \$1.00 each. Delivered.



Mahonia Leatherleaf Hollygrape. \$1.00 Page 22

## PHOTINIA

**Glabra.** Great Asiatic broadleaf 10-ft. evergreen with large leaves of rich shiny green. Effectively used for tall foundations, screens, groupings and massing. Mail size, \$1.00 each. Delivered.

**Serrulata.** Very conspicuous, fast-growing, ornamental and interesting Chinese evergreen shrub. Young growth and foliage reddish, changing rich shining green, showing both colors throughout the season. Leaves long and beautifully serrated. Splendid for backgrounds, screens, specimens and tall groupings. Mail size, \$1.00 each. Delivered.

## TEA PLANT

**Bohea Tea.** *Thea sinensis*. The true Tea Plant. Beautiful evergreen shrub, reaching 4 to 8 ft. Rich green, oval leaves in fall and winter with fragrant 1½-in. single white flowers. Mail size, \$1.00 each. Delivered.

## PYRACANTHA

**Laland Firethorn.** Evergreen Hawthorn. *P. coccinea lalandi*. Handsome 10 to 12-ft. evergreen shrub with small, narrow leaves and tiny white flowers. Bright blood-orange berries all along branches. For entrance markers. Mail size, \$1.00 each. Delivered.

**Chinese Firethorn.** *P. yunnanensis*. Similar to Laland except spreading growth and brilliant scarlet berries, which are relished by birds. Mail size, \$1.00 each. Delivered.

## SHADE AND ORNAMENTAL TREES

### GORDONIA ALATAMAHA

The Lost Gordonia. Native of Georgia but now only rarely found in cultivation. Grows to 20 ft., with 6-in. bright green, shining leaves, turning scarlet in fall. Showy 3-in. flowers in leaf-axils in late summer are white and magnolia-like. Specimen lawn trees for well-drained, rich soils. Delivered—Heavy young trees, \$2.50 each.

### ELM

**Chinese.** *Ulmus pumila*. Fastest-growing shade tree of large size with spreading branches. Stands drought, needs little or no attention, the healthiest of the Elm family. Earliest to put on leaves in spring and last to drop them in fall. Rich, bright green foliage; smooth bark. Graceful, stately tree. Wonderful lawn, street or highway tree. Needs good drainage. Delivered—2 to 3 ft., 40c each; 3 for \$1.00. 3 to 4 ft., 60c each; 3 for \$1.50. F. O. B.—5 to 8 ft., \$1.25 each. 8 to 10 ft., \$2.00 each. Special planting-size offer Chinese Elms: 15 for \$1.00; 50 for \$2.00; 200 for \$5.00; 1000 for \$22.50. Delivered. Grow shade quickly and abundantly at these bargain prices.

**American.** *U. americana*. Of rapid growth, with long, spreading, pendent branches forming giant arches over lawn, road, or street. Tough wood; fine foliage. Permanent shade tree. F. O. B.—5 to 6 ft., \$1.25 each. 6 to 8 ft., \$1.75 each.

### ORNAMENTAL CHERRY

**Japanese.** Double pink flowers in greatest profusion in early spring. 3 to 4 ft., \$1.50 each; 3 for \$3.75. Delivered.

**Weeping.** Budded on 5-ft. standards. Sweeps of loveliest pink blooms early. F. O. B. Atlanta—2-yr. heads, \$5.50 each. 3-yr. heads, \$6.50 each.

### GINKGO · MAIDENHAIR TREE

Very tall Chinese tree with long-stalked, fan-shaped leaves divided in the middle. Of easy cultivation in good soil. A hardy ornamental and street tree. Resinous and deciduous. Survivor of geologic ages. Delivered—Strong plants, \$1.00 each.



Glossy Privet. 75c. Page 22



Flowering Crabapple. \$1.00

## WHITE ASH

*Fraxinus americana*. Very ornamental shade trees with large cooling leaves. F. O. B.—6 to 8 ft., \$1.50 each.

## DOGWOOD

*Cornus florida*. Our native Southern beauty, covered with sheets of white bloom in early spring. Delivered—Mail size, 25c each; 10 for \$1; 25 for \$2.00; 100 for \$6.00; 1000 for \$49.75. F. O. B.—4 to 6-ft. specimens, \$1.00 each.

**Double White.** *C. florida plena*. Double-flowered form; rare and attractive. Delivered—18 in., \$1.45 each. 2 ft., \$1.95 each. 3 ft., \$2.95 each.

**Red Flowering.** *C. florida rubra*. Rose pink flowering. Grafted plants on white stocks. Delivered—Mail size, \$1.00 each. 2 ft., \$1.50 each. 3 ft., \$2.00 each.



Double Flowering Peach. 60c

## GOLDEN RAIN TREE

Varnish Tree. *Koelreuteria paniculata*. Chinese deciduous lawn tree with glossy divided foliage of fine autumn colors and large terminal panicles of showy, golden yellow flowers that simply cover the tree in June. Flowers are followed by large bladder-like seed-pods. Ultimate height, 20 to 25 ft. F. O. B.—3 to 4 ft., \$1.00 each.

## JAPANESE FLOWERING CRABAPPLE

*Malus floribunda*. Very shapely small tree. Buds are warm red, opening to light pink, single flowers, delicately shaded and fragrant. In spring, it is a mass of color, the most prolific bloomer of all—and most popular. Delivered—2 to 3 ft., \$1.00 each. 3 to 4 ft., \$1.50 each.



Red Flowering Dogwood. \$1.00

## COLORFUL MAPLES

**Norway.** European Hard Maple. *Abies platanooides*. Fine for specimens or shade on lawns, streets, and driveways. Large, dark foliage, round and spreading in growth. F. O. B.—4 to 6 ft., \$1.25 each.

**Silver.** Water Maple. *A. dasycarpum*. Quick grower, easy to transplant, early blooms and grand foliage. Large, deeply toothed light green leaves with silvery sheen beneath. F. O. B.—6 to 8 ft., \$1.25 each. 8 to 10 ft., \$1.75 each.

**Sugar.** *A. saccharum*. Long lived; shapely, rounded head of dense foliage and smooth trunk. Leaves are held late and all drop quickly, a lawn advantage. F. O. B.—5 to 6 ft., \$1.75 each. 6 to 8 ft., \$2.50 each.

## POPLAR

**Lombardy.** *Populus nigra italica*. Most rapid-growing, tall, slender tree. F. O. B.—6 to 8 ft., \$1.25 each.

**Tuliptree.** *Liriodendron tulipifera*. Fast grower to great height; pyramidal shape. Large, glossy leaves and yellowish green, tulip-shaped flowers. F. O. B.—6 to 8 ft., \$1.25. 8 to 10 ft., \$2.00.

## REDBUD · JUDAS TREE

*Cercis canadensis*. 20-ft. tree with carmine-pink flowers along the branches in early spring before heart-shaped leaves appear. Native to our woods. Used the same as dogwood. F. O. B.—4 to 6 ft., \$1.25 each. 6 to 8 ft., \$1.75 each. Mail size, Delivered—3 for 50c; 10 for \$1.00; 25 for \$2.00.

## ROBINIA · BLACK LOCUST

A valuable fast-growing shade tree for utility as well. Hardy and resistant to pests. F. O. B.—8 to 10 ft., \$1.50 each.

## MIMOSA ACACIA · SILK TREE

*Albizia julibrissin*. Flat-topped, picturesque tree 20 to 25 ft. tall, wide-spreading. Large fern-like leaves give a feathery effect. Flowers are silky pink and thistle-like. F. O. B.—4 to 6 ft., \$1.25 each. 6 to 8-ft. specimens, \$1.95 each. Delivered—strong plants, 40c each; 3 for \$1.00.

## SYCAMORE · FLATANUS

Rapidly growing shade tree with large leaves of refreshing greenness. Grows well almost anywhere. F. O. B.—Specimen trees, \$5.00 each up.

## TEXAS UMBRELLA

*Melia azedarach umbrauliformis*. Chinaberry Tree with dense, spreading, umbrella-shaped head. Used for specimens and in hedgerows. F. O. B.—4 to 6 ft., \$1.50 each.

## GLORIOUS MAGNOLIAS

**Southern.** *M. grandiflora*. See page 22.

**Chinese.** *M. soulangeana nigra*. Deciduous, handsome, early-flowering small tree covered with large tulip-shaped flowers, dark purple outside, lighter inside. For specimen or shrub border. Delivered—Strong plants, \$1.75 each; 3 for \$4.95.

**Star.** *M. stellata*. Early-flowering shrub or tree similar to Chinese except have most beautiful white star-like blossoms. A superb companion to the Chinese in the shrub border. Delivered—Strong plants, \$2.95 each.

## STURDY WATER OAK

*Quercus nigra*. Stately, massive tree of rounded form, with willowy leaves; often 80 ft. tall. Rapid grower for an Oak. A beautiful lawn or street shade tree. F. O. B.—6 to 8 ft., \$1.50 each.

## FLOWERING PEACH

**Double Red.** *Amygdalus persica*. Gorgeous in bloom. Every twig and branch is covered with double red flowers, like rambling roses, in early spring. Delivered—2 to 3 ft., 60c each; 3 for \$1.50.

**Double White.** Same prices.

## WEeping WILLOW

*Salix babylonica*. Drooping, arching branches. Does well in moist situations. Delivered—2 to 3 ft., 40c each; 3 for \$1.00. F. O. B.—4 to 6 ft., \$1.00 each.



Chinese Tulip Magnolia. \$1.75

# HASTINGS' *DIXIE* ROSE COLLECTION



Red Radiance. 50c



Talisman. 50c



Pink Radiance. 50c



Luxembourg. 50c



Elizabeth of York. 60c



Editor McFarland. 50c



Kaiserin Auguste Viktoria. 50c



Etoile de Hollande. 50c

## HASTINGS' DIXIE ROSE COLLECTION

Glorious Everblooming Rose Bushes, including the finest and most satisfactory of all varieties. Hardy, outdoor-grown, strong, 2-year budded plants, for full blooming the first season.

Vigorous, disease-resistant, free-flowering favorites all over the South, including the finest of all red Roses, Etoile de Hollande, and that most perfect rich pink beauty, Elizabeth of York. All are pictured in color above.

One each of the 8 Dixie Roses

**\$2.95** Post-paid

**SPECIAL! Both Collections sent postpaid for \$5.00**

## Hastings' *Super Dixie* Rose Collection

Six more outstanding Roses for the South, a real bargain to plant with the Dixie Collection above. All are strong growers, grand bloomers, big favorites with Rosarians.

- Dainty Bess.** Exquisite pink. Finest of all single Roses ..... 50c each
- Night.** Fragrant; deep crimson-red. Strong grower..... 60c each
- Picture.** Loveliest pure pink Rose. Especially fine in South ..... 60c each
- Poinsettia.** Glorious long buds; huge brilliant red blooms..... 60c each
- Sister Therese.** Most satisfactory yellow Rose in the South ..... 50c each
- Sunny South.** Golden pink. Tall-growing. Always in bloom..... 60c each

One each of the above 6 glorious Rose plants **\$2.45** Post-paid



Dainty Bess. 50c

# The World's Finest ROSES

## BARGAIN POSTPAID PRICES

Make your own selections

50c Roses are any 3 for \$1.25; 6 for \$2.25; 12 for \$3.95; 25 for \$7.95; 100 for \$27.50.

60c Roses are any 3 for \$1.50; 12 for \$4.95; 25 for \$8.95.

75c Roses are any 3 for \$1.75; 12 for \$5.95; 25 for \$11.25.

(Patented Roses excepted)

## CHOICE PINK BUSH ROSES

**Betty Uprichard.** *HT. Soft Salmon-Pink.* Coppery red buds, opening orange-carminé with salmon reflexes; spicy fragrance. Strong-growing, persistent-blooming and healthy. Magnificent bedding and cutting. Delightful color and long-keeping. 50c each.

**Briarcliff.** *HT. Silver-Pink.* Finest large-pointed buds; double high-centered, brilliant rose-pink, fragrant, lasting blooms on long, stiff stems. Disease-resistant foliage. Free-flowering. 50c each.

**Dame Edith Helen.** *HT. Clear Pink.* Perfect, shapely buds and substantial high-centered blooms, sweetly scented on long, straight stems. Vigorous grower. 60c each.

**Edith Nellie Perkins.** *HT. Coppery Orange-Pink.* Large, double flower with fine pointed center; inside of petals salmon-pink, outside coppery red and orange. 60c each.

**Editor McFarland.** *HT. Pink.* Long-pointed buds and grows like Radiance, with superior flowers for cutting. Very artistic pink, becoming very popular in South. 50c each.

**Georg Arends.** *HP. Soft Pink.* Long, delicately shaped buds; deep-petaled, pointed, scented blooms. Very vigorous; tall. Fine foliage. Blooms sparsely through the summer, without a fault in the fall. Finest pure unshaded pink Rose of any class. 60c each.

**Isobel.** *HT. Orange-Pink. Single.* Its only rival is Dainty Bess as finest single Rose. Bronzy toned buds opening flaming orange-pink; five enormous petals. 75c each.

**Killarney Queen.** *HT. Rich Pink.* Very free flowering. Closer to original in color but fuller (17 petals) and little stronger growth. Practically immune to mildew and best of the beautiful Killarney group. 1934 Sweepstakes, Atlanta Rose Show. 50c each.

**Los Angeles.** *HT. Salmon-Pink.* Lovely buds and flowers with yellow shadings; perfumed. Does well in some locations. Subject to black-spot and dying back but worth trying. 50c each.

**Maman Cochet.** *T. Carmine-Pink.* Creamy buff at center; very large, double blooms of fine form. Excellent grower; disease-resistant and very prolific bloomer. 50c each.

**Margaret McGredy.** *HT. Orange-Vermilion.* Marvelous color. Large, brilliant oriental-red buds, lightening to deep rose with gold base; light, spicy fragrance; long lasting. Vigorous, disease-resistant plant. One of world's greatest Roses. 60c each.

**Mme. Butterfly.** *HT. Light Pink.* Flower of exquisite shape and richly perfumed, tinted gold at petal bases. Brighter color and better bloomer than its parent, Ophelia. Strong plant, throwing big branching sprays of bloom. 30 petals. A world's best. 50c each.

**Mrs. Charles Bell.** *HT. Shell-Pink Radiance.* Lovely blooms of fine globular form and soft salmon shadings. Exactly like its parent, Radiance, except finer, softer color. Third largest selling Rose in America. Just about always in bloom. 50c each.

**Paul Neyron.** *HP. Dark Lilac-Rose.* Immense blooms of fair form, very double and fragrant. Quite vigorous; strong, rather smooth canes. Largest of all. Very tall and quite thornless. 50c each.

**Radiance.** *HT. Rose-Pink.* Brilliant, well-formed, globular buds; very fragrant flowers. Splendid grower and wonderful bloomer. Most reliable pink HT. Rose. Best in South and does well for everywhere where Roses will grow. 50c each.

**Rapture.** *HT. Pink Blend.* Intensified sport of Mme. Butterfly. Medium-sized flower, deeper pink than Mme. Butterfly, borne singly on long stem. Stronger grower and much better producer than its parent. Splendid for garden and cutting. 60c each.



1, Briarcliff, Pink; 2, Killarney Queen, Pink; 3, Lord Charlemont, Red; 4, Mrs. Charles Bell, Pink; 5, Georg Arends, Pink; 6, Mrs. Pierre S. du Pont, Yellow; 7, Maman Cochet, Pink; 8, Margaret McGredy, Pink; 9, Betty Uprichard, Pink; 10, Dame Edith Helen, Pink; 11, Rapture, Pink; 12, Editor McFarland, Pink.

## TWO-TONED AND GREEN ROSES

**President Hoover.** *HT. Pink, Flame, Scarlet, Yellow.* Gold Medal for Best Rose 1930-35, A. R. S. Large flowers with broad, thick petals, very fragrant. Clean, handsome foliage. Retains color. Better than Talisman in size, growth, and flowering. 50c each.

**Talisman.** *HT. Gold Medal for Best Rose 1925-30, A. R. S.* Sensation at all shows. Long, perfect buds; flowers have 25 to 28 petals in a blend of colors indescribable but combining gold, apricot, yellow, pink, old-rose or deep rose-pink, all of which brighten and get richer on opening. 50c each.

**Viridiflora.** Green Rose. *Sp. Green.* Very odd and interesting "sport" having double flowers consisting of clusters of sepals. Rare Novelty. Supply very limited. Order promptly. 75c each.

## THE 3 RADIANCE ROSES \$1.15

The largest selling Roses in the world

One plant each of the 3 most popular, most satisfactory, heaviest and most continuous flowering Roses in America.

**Radiance** (pink), **Red Radiance** (rosy red), and **Mrs. Charles Bell** (soft salmon-pink). They are too well known for comment.

One plant each—delivered for \$1.15. 3 each (9 Roses) for \$2.95. 6 each (18 Roses) for \$5.45. 12 each (36 Roses) for \$9.95

## THE WORLD LOVES RED BUSH ROSES

**NEW RED ROSES.**—See page 29 for the All-America Rose Selections: Charlotte Armstrong and Heart's Desire, the finest new Roses since Crimson Glory. Christopher Stone, Crimson Glory, Crimson Talisman, Etoile de Hollande, Gloire de Chedane-Guinoisseau, Night, Poinsettia, Texas Centennial and The Chief are other glorious red Roses. All are on Page 29.

**Ami Quinard.** *HT. Dark Red.* Blackish buds; semi-double flowers of unfading crimson-maroon with black luster. Strong, upright, vigorous plant, productive of rose-scented flowers. 50c each.

**Charles K. Douglas.** *HT. Crimson-Scarlet.* Fine, long-pointed buds; large, loose flowers, strongly fragrant. Strong branching, grand, unfading red garden Rose. Free from disease. 50c each.

**E. G. Hill.** *HT. Crimson.* Noted for form and fragrance. Flowers are large, full, and splendid for cutting. Plants are vigorous and productive. 50c each.

**Lord Charlemont.** *HT. Crimson-Scarlet.* Crisp, stately buds of intense color, almost black shadings. Perfect, shapely, long-pointed buds and large, double, sweet-scented flowers. 75c each.

**Louis Philippe.** *China. Red.* Old favorite scarlet-red Rose originated 1834. Very resistant to disease, growing very rank farther South. A fine old Rose. 75c each.

**McGredy's Scarlet.** *HT. Scarlet.* Big rich scarlet buds, opening to show orange base and turning lighter to rose. Heavy, perfect bloomer on vigorous growth. 60c each.

**Red Briarcliff.** *HT. Red.* Glorious red sport of the famous rose-pink Briarcliff. Large, long-pointed buds and double flowers. Prolific bloomer on long stems. 75c each.

**Red Radiance.** *HT. Rose-Red.* Big, globular flowers on strong canes, which are freely produced until frost. Excellent foliage. The most popular Rose in America and one that gives everyone satisfaction plus. 50c each.

## YELLOW BUSH ROSES TO DELIGHT EVERYONE

**Alex. Hill Gray.** *T. Lemon.* Pale lemon-yellow, deeper in center of perfectly formed fragrant flowers. Moderate growth and bloom. One of the most beautiful Roses. 50c each.

**Golden Dawn.** Hardy Bush Marechal Niel. *HT. Yellow.* Delightfully fragrant, large buds opening to full double flowers for Southern gardens. 60c each.

**Golden Ophelia.** *HT. Yellow.* Cream-yellow and pale pink with golden glints in petal folds; very fragrant. Good growth and liberal bloomer. 28 petals. Protect against black-spot. 50c each.

**Golden Rapture.** *HT. Clear Golden Yellow.* Beautiful pointed buds and very large flowers of old rose fragrance. Vigorous grower, with large, glossy foliage. 60c each.

**Joanna Hill.** *HT. Yellow.* Very large, long-pointed bud, opening to a full, semi-double, long-lasting, fragrant flower. Excellent for cutting and unique soft gold coloring. 50c each.

**Lady Hillingdon.** *T. Saffron-Yellow.* Slender, pointed buds and elegantly cupped flowers of deep yellow, paling at edges; fragrant. Erect, with perfect foliage. Simply exquisite. 50c each.

**Luxembourg.** *HT. Rich Apricot.* Orange-centered, fragrant, exquisitely shaped. Beautiful for cut-flowers. Similar to Sunburst but with more pink and stronger grower. 50c each.

**Mrs. Pierre S. du Pont.** *HT. Golden Yellow.* Bud is long-pointed, rich reddish gold, almost orange at petal bases. Exceptional bloomer on low, healthy, disease-resistant bushes. Winner of many gold medals and a great yellow. 60c each.

**Roslyn.** *HT. Golden Yellow.* Long-pointed orange buds; large, full, semi-double flowers. Vigorous. 60c each.

**Sunburst.** *HT. Orange.* Beautiful orange buds and orange-centered, yellow flowers, fragrant and of splendid shape. Spreading growth. Not very vigorous at first but a beauty. 50c each.



1, McGredy's Scarlet, Red; 2, Edel, White; 3, Golden Ophelia, Yellow; 4, Golden Dawn; 5, White Maman Cochet; 6, Lord Charlemont, Red; 7, Mrs. P. S. du Pont, Yellow; 8, Alex. Hill Gray, Yellow; 9, Talisman, Two-toned; 10, K. Auguste Viktoria, White; 11, Pres. Herbert Hoover, Two-toned; 12, Lady Hillingdon, Yellow.

## BEST WHITE BUSH ROSES

See Caledonia and White Briarcliff on Page 29. The new White Radiance is creating quite a sensation and is listed across the bottom of this page. We hope you like it, too.

**Double White Killarney.** *HT. Pure White.* Long-pointed buds opening enormous petals. Vigorous grower and very free-flowering. More doubled than old variety. 50c each.

**Edel.** *HT. Pure Ivory-White.* Extra large, well-built, slightly fragrant, globular blooms, on erect stems. Vigorous. 89 petals. 50c each.

**Frau Karl Druschki.** *HP. White American Beauty.* Magnificent, snow-white, deep, firm petals; absolutely perfect shape; no fragrance. Best white Rose in existence. Tall, free bloomer. 50c each.

**Innocence.** *HT. Pure White.* Enormous blooms of 12 petals with a center of striking red stamens tipped with gold. Makes exhibition buds and finest of single or semi-double white Roses. Striking. 75c each.

**K. Auguste Viktoria.** *HT. Creamy White.* Perfect buds and flowers, lemon-tinted at center; fragrant. Hardy and rather vigorous. Extremely lovely and the indispensable white. 50c each.

**White Maman Cochet.** *T. White.* Often pink flush on outer petals; fully double, very large, perfect. Very free bloomer. Disease-resistant, vigorous, spreading growth. 50c each.

### GENUINE WHITE SPORT OF WORLD-FAMOUS RADIANCE ROSE

**WHITE RADIANCE.** *HT. White.* A true white development from the most popular group of Roses in the world. Same heavy, vigorous, healthy growth and a superb white for everyone's garden. 75c each; 3 for \$1.75; 12 for \$5.95.

# NEW CLIMBING ROSE SENSATIONS

The Finest Climbing Roses in the World!

**Blaze.** Everblooming Paul's Scarlet. Cl. HT. Scarlet-Red. Patent 10. Flowers on old and new growth. A cross between Paul's Scarlet, best red climber, and everblooming Gruss an Teplitz. \$1.25 each.

**Climbing Caledonia.** Cl. HT. White. Strong climbing form of greatest white of all. \$1.00 each.

**Climbing Crimson Talisman.** Cl. HT. Crimson-Red. Typical Talisman form in a moderately vigorous crimson-red climber, worth while. \$1.00 each; 3 for \$2.50.

**Climbing Dainty Bess.** Cl. HT. Rose-Pink. Huge single flowers of 6 petals, in enormous clusters. Stronger than bush Dainty Bess, the finest and most thrilling single Rose. 60c each.

**Climbing Edith Nellie Perkins.** Cl. HT. Coppery Orange-Pink. Strong climbing form of this exquisite bush Rose. See page 26. \$1.00 each.

**Climbing Etoile de Hollande.** Cl. HT. Rich Red. The world's best red Rose now in a vigorous-growing climber. A sight in bloom to take your breath. Glorious big double flowers, fragrant and grand for cutting too. 75c each.

**Jacotte.** HW. Reddish Orange. Exquisite 3-in. flowers in clusters. Strong-growing; profuse bloomer, holly-like foliage. Sensational orange and our choice of exotic climbers. 75c each.

**Climbing Los Angeles.** Cl. HT. Salmon-Pink. Fine pointed buds; delightful fragrance; rather vigorous. Needs good soil, but much better than bush form. 75c each.

**Climbing Luxembourg.** Cl. HT. Orange. Stronger grower than the bush variety. Glorious golden yellow, freely suffused apricot-pink. Grand large flowers on long stems and loads of them. Fine for cutting. 60c each.

**Golden Climber.** HW. Golden Yellow. Patent 28. Hardy, long-lasting, large double flowers in clusters. Glossy foliage and vigorous growth. Winner. \$1.00 each.

**Harison's Yellow.** Spin. Yellow. Medium, semi-double, intense yellow flowers borne in clusters in May. Small leaves. Vigorous. 60c each.

**Kitty Kininmonth.** Cl. HT. Fadeless Pink. Enormous, double, brilliant pink with satiny glow. Very vigorous, reaching 15 feet. Heavy bloomer in early season, a mass of color. 75c each.

**Marechal Niel.** Cl. Noisette. Golden Yellow. Lovely buds and flowers of deep golden yellow; double and extremely fragrant. Strong growth and abundant bloom, not recurrent. Tender but a model of beauty and fragrance. \$1.00 each.

**Mary Wallace.** HW. Bright Pink. Large, very bright pink suffused shining gold; double, fragrant. Vigorous (10 to 15 ft.). Superb foliage. Early. 60c each.

**Mermaid.** HB. Ivory-White. Absolutely beautiful, immense single flowers. Pale yellow with huge clusters of amber stamens. Clusters of buds on tips of new growth. Glistening foliage. 75c each.

**New Dawn.** Everblooming Dr. W. Van Fleet. HW. Pink. Patent 1. Just think of having an everblooming form of Dr. W. Van Fleet, the most popular climbing Rose. Here it is. \$1.50 each.

**Ramona Cherokee.** Lavigata. Pink. Fragrant, single, 3-in. flowers. Strong climber with shining foliage. Hardy in the South. 75c each.

**Red Cherokee Rose.** Lavigata. Rosy Red. Red form of the famous Cherokee. For fences and naturalizing. 75c each.

**White Banksia.** Banksia. White. Same growth character and development as the yellow variety and a beautiful companion to it. 75c each.

**Yellow Banksia.** Banksia v. Yellow. Rampant grower, festooned in springtime with rich little double pompon flowers. Hardy south of Atlanta and typical of beautiful old Southern homes. 75c each.



© Pinocchio, "The Rose of Tomorrow." \$1.25

## POLYANTHA AND FLORIBUNDA ROSES

These Are Bush Roses

Frequently called Baby Ramblers, Polyanthas and Floribundas are bushy Everblooming Roses, blooming profusely throughout the entire growing season. They bear small to medium flowers in immense, many-flowered clusters, often blanketing the bush. Plants are usually 1½ feet or taller, for bedding, edging and in the perennial border. Some have exquisite buds for miniature bouquets, corsages and buttonholes. They are very hardy. Edge your Rose-garden with "Sweethearts."

**Baby Doll—Tip-Top.** Yellow and pink to deep rose petal tips in an exquisite blend—a three-tone coloring. Distinct, shapely buds and reflexed flowers. Extra strong, tall and bushy. 50c each.

**Cecile Brunner.** Sweetheart Rose. Light Pink. Yellow base; small, exquisitely formed buds and flowers in graceful clusters. Foliage waxy and healthy. Most beautiful individual flowers of the whole race. 50c each.

**Donald Prior.** Brilliant Red. Patent 377. Eight-petaled, 3-inch richest wine-red flowers in large bursts of bloom throughout the season; old Damask fragrance. Branching, 18-inch plants give a huge splash of brilliant color; a wonderful Floribunda. 85c each; 3 for \$2.15; 12 for \$3.50.

**Gloria Mundi.** Orange-Scarlet. Fiery large flower-clusters. Vigorous, bushy plant with glossy leaves and a sensational color. Its orange tone lasts well, even in hottest weather. 50c each.

**Gruss an Aachen.** Apricot-Pink. Extremely double, large, profuse, cluster, flowering all season. Strong, vigorous healthy bush. 50c each.

**Ideal.** Crimson. Striking dark flowers of medium size, delightful fragrance, spectacular effect. Immense compact bunches borne in profusion on vigorous plants throughout the season. 50c each.

**Margy.** Scarlet. Brilliant new glowing scarlet, blooming through the entire season. This will really focus attention. Strong grower. 60c each.

**Perle d'Or.** Yellow. Exquisite little buds and flowers of light orange and creamy yellow, borne in graceful sprays. Excellent grower. 50c each.

**Permanent Wave.** Rose-Red. Patent 107. Fluted and wavy petaled flowers in large clusters on strong, vigorous bushes. Unique and extremely attractive. 75c each; 3 for \$1.90; 12 for \$7.50.

**Pinocchio.** Golden Salmon. Patent 484. Called the "Rose of Tomorrow." Hundreds of charming little pointed buds, opening beautiful Sweetheart-type, 1½-in. blooms in large clusters. Fruity fragrance. Grand. \$1.25 each; 3 for \$3.15.

**Red Lafayette.** Bright Red. Large, semi-double, striking light crimson; open, frilled. Blooms profusely, even under adverse conditions. 50c each.

**World's Fair.** Deep Crimson. Patent 362. Large, semi-double, fragrant clusters all season. Big, bushy plants. Floribunda form of Crimson Glory, a parent. 1940 All-America Rose Selection. \$1 each.



© Golden Climber—Mrs. Arthur Curtiss James. \$1.00

### Bargain Rose Prices

ALL PRICES ARE PREPAID WITHIN THE UNITED STATES

50c Roses are any 3 for \$1.25; 6 for \$2.25; 12 for \$3.95; 25 for \$7.95; 100 for \$27.50  
 60c varieties are 3 for \$1.50; 6 for \$2.75; 12 for \$4.95; 25 for \$8.95; 100 for \$33.00  
 75c varieties are 3 for \$1.75; 6 for \$3.25; 12 for \$5.95; 25 for \$11.25; 100 for \$40.00.  
 (Patented Roses excepted)



Mary Margaret McBride  
\$1.50



Condesa de Sastago. 60c



Crimson Glory. \$1.25



Texas Centennial. 75c

## To Thrive in Southern Gardens TESTED NEW AND PATENTED ROSES

Tested In Our Own All-America Trial Gardens

**Caledonia.** HT. Pure White. Large, long-pointed buds; huge flowers full double, high center, slightly fragrant and borne singly on long, strong stem. Finest ever-blooming white Rose. 60c each.

**Charlotte Armstrong.** HT. Cherry-Red. Patent 155. 1941 All-America Rose Selection. Beautiful long, blood-red buds and glorious flowers. Erect, vigorous; prolific, continuous bloomer; fragrant. Top winner. Best new Rose in ten years. A "must have." \$1.25 each; 3 for \$3.15.

**Christopher Stone.** HT. Scarlet-Crimson. Brightest of all Roses and absolutely necessary to every complete garden. Brilliant, daring, and most spectacular Rose in the world. Thrilling from the first show of color. Old Damask fragrance and excellent for n. Strong grower. Very special, 75c each.

**Condesa de Sastago.** HT. Copper and Yellow. Highly colored, spice-scented new Spanish novelty. Buds are golden balls, opening brilliant flame. Plants very vigorous in South. Always gets first attention. 60c each.

**Crimson Glory.** HT. Deep Crimson. Patent 105. At last the ideal red Rose. Perfect in color, form, fragrance. Large, full flowers on strong stems. Healthy grower. \$1.25 each; 3 for \$3.15.

**Crimson Talisman.** HT. Crimson-Red. A well-selected Talisman sport blooming very uniformly. Well-known Talisman form and habits. 75c each.

**Dainty Bess.** HT. Soft Rose-Pink. Large, single flowers with wide, delicately crinkled petals and a large cluster of stamens with wine-red filaments. 50c each.

**Eclipse.** HT. Yellow. Patent 172. Best of all new yellow Roses and very well suited for Southern culture. Long slender buds of rich yellow. \$1.25 each; 3 for \$3.15.

**Elizabeth of York.** HT. Cerise-Pink. Pointed buds; medium-sized flowers borne singly on long stems. Profuse, continuous bloomer. Our Southern favorite. 60c each.

**Etoile de Hollande.** HT. Brilliant Red. Generally known as world's best red Rose. Magnificent size, enormous petals, very fragrant. Free-flowering. 50c each.

**Gloire de Chedane-Guinoisseau.** HP. Red. Brilliant crimson-red Frau Druschki. Vigorous growth with huge fragrant flowers on long stems. Wonderful. 75c each.

**Heart's Desire.** HT. Red. Patent 501. The only 1942 All-America Rose Selection. A crimson Radiance; vigorous, free bloomer, pointed buds. \$1.50 each; 3 for \$3.75.

**Lowell Thomas.** HT. Butter-Yellow. Patent 595. 1944 All-America Rose Selection. Long-pointed buds; full double flowers; moderate fragrance. Vigorous growth. Rich foliage. See back cover picture. \$2.00 each; 3 for \$5.40.

**Madre.** HT. Pink Blend. Enormous yet soft blend of pink with yellow petal base. Strong stems. A real find. 75c each.

**Mary Margaret McBride.** HT. Deep Coral-Pink. Patent 537. 1943 All-America Rose Selection. Pointed buds to high-centered, aromatic, double flowers of lovely shading; vigorous and hardy. \$1.50 each; 3 for \$3.75.

**Mme. Chiang Kai-shek.** HT. Light Yellow. Patent applied for. 1944 All-America Rose Selection. Long-pointed buds; large double flowers; medium fragrance. Very vigorous, healthy bushes. Exquisite. See back cover picture. \$2.00 each; 3 for \$5.40.

**Night.** HT. Dark Crimson. Medium-sized, full globular, deepest crimson-red, fragrant flowers on long, strong stems. Good grower. 60c each.

**Picture.** HT. Pink. Loveliest of all pure pink Roses, bearing abundant flowers throughout the season on good stems from a strong plant. The best pink Rose for Southern gardens. 60c each.

**Poinsettia.** HT. Brilliant Red. Huge; ideal long-pointed buds; glorious flowers. Vigorous tall grower, long stems, and richest scarlet-red. Grand. 60c each.

**Sister Therese.** HT. Yellow. Long-pointed slender buds of deep chrome-yellow. Upright, heavy-foliaged bush. The best yellow Rose for garden and cutting. 50c each.

**Sunny South.** HT. Pink. Pointed buds of golden pink, opening large petals to the showiest, most vigorous Rose in the Southern garden. 60c each.

**Texas Centennial.** HT. Rosy Red. Patent 162. A huge, true rosy red sport of the strong, vigorous Rose, President Hoover. Our stock has been selected for rich, even coloring. 75c each; 3 for \$1.90.

**The Chief.** HT. Flame Color. Patent 456. 1940 All-America Rose Selection. Grand, big pointed buds. \$1.00 each.

**White Briarcliff.** HT. White. Patent 108. Absolutely pure white Rose of wonderful form and with a strong plant. A real bride's Rose. \$1.25 each; 3 for \$3.15.

**All-America Collection**

|                      |   |                             |
|----------------------|---|-----------------------------|
| Mme. Chiang Kai-shek | } | <b>ALL 3 FOR<br/>\$4.45</b> |
| Lowell Thomas        |   |                             |
| Eclipse              |   |                             |

See Back Cover Pictures



Golden Dawn. 60c. Page 27



Crimson Talisman. 75c



Night. 60c



Caledonia. 60c

# GLORIOUS SOUTHERN CLIMBING ROSES

See page 28 for other Climbers

Hardy, 2-year-old, well-branched, Nursery-grown, budded Rose plants. Set Climbing Roses about 6 feet apart.

All Climbing Hybrid Tea (Cl. HT.) and Climbing Tea (Cl. T.) Roses are so-called Everblooming Roses. Hybrid Wichuraiana (HW.) and Climbing Polyantha (Cl. Poly.) Roses are seasonal mass bloomers.

## Special Offer!

The Most Brilliant, Glowing, Colorful, of All Climbing Roses

**Paul's Scarlet Climber.** HW. Red. Intense scarlet flowers of fine shape; brightest and purest red climber. Midseason. Excellent pillar Rose. Blooms in clusters and lasts several weeks. Easily the best red climber; holds its color. Cover your fences with it. 50c each.

Plant them to cover terraces, trellises, mail-boxes, and garages. Outline the bush Rose-garden with climbers for background and enclosure. These glorious new climbers bring the most colorful display to the garden.

5 for \$1.75      10 for \$3.25      50 for \$13.95  
DELIVERED

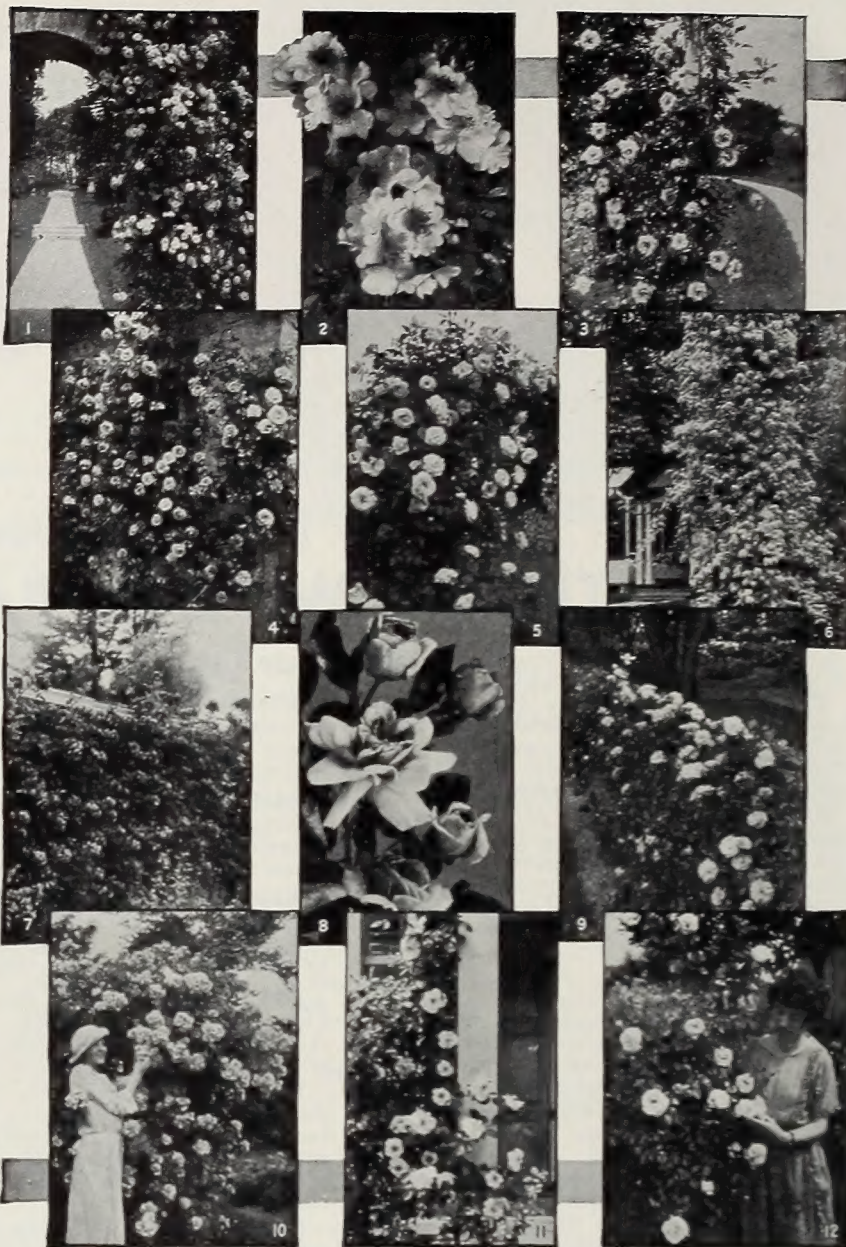
**Climbing American Beauty.** HW. Brilliant Carmine. Fragrant 3 to 4-in. flowers of fine form in abundance. Early and beautiful, especially in a cool season. Color fades in hot sun. Vigorous. 50c each.

**Climbing Cecile Brunner—Sweetheart Rose.** Cl. Poly. Pink and Yellow. Small, fragrant, exquisite buds and flowers in sprays. Continuous blooming on sturdy plants. Everybody loves the Sweetheart Rose and this does even better than the bush form. 50c each.

**Climbing K. A. Viktoria.** Cl. HT. White. Very double, pure white, perfectly formed flowers with a faint lemon center. Moderately strong climber and preferred to the bush form. 50c each.

**Climbing Lady Hillingdon.** Cl. T. Golden Apricot. Charming long buds and shapely flowers of soft apricot, deepening to golden yellow; fragrant; lasting. Strong plant. Excellent foliage. 50c each.

**Climbing Ophelia.** Cl. HT. Yellow and Pink. Vigorous climbing form of the beloved Ophelia. Lovely continuous bloomer. Give plenty of sunlight and room to spread. Exquisite. 50c each.



1, Jacotte, HW., page 28; 2, Cl. Dainty Bess, Cl. HT., page 28; 3, Cl. Lady Hillingdon, Cl. T.; 4, Cl. American Beauty, HW.; 5, Spanish Beauty, Cl. HP.; 6, Yellow Bank-sia, page 28; 7, Cl. Cecile Brunner, Poly.; 8, Cl. Radiance, Cl. HT.; 9, Mary Wallace, HW., page 28; 10, Paul's Scarlet Climber, HW.; 11, Silver Moon, HW.; 12, Dr. W. Van Fleet, HW.

**Climbing Radiance.** Cl. HT. Rose-Pink. Climbing form of this most satisfactory of all pink Roses. In great demand and stock is limited. 50c each.

**Climbing Red Radiance.** Cl. HT. Rose-Red. Climbing form of America's most popular Rose. Big, globular flowers on fine cutting stems. Just as fine as Radiance and deeper color. Order early. 50c each.

**Climbing Talisman.** Cl. HT. Red and Gold. A glorified Talisman, of stronger growth, larger and better flowers on stronger stems for cutting. Beautiful long-pointed buds and the most striking bicolor effect of all Roses. 50c each.

**Dr. W. Van Fleet.** HW. Pink. Ranked best climbing Rose by American Rose Society. Perfect, long-pointed, pink buds on long stems for cutting. Large, thorny canes produce thousands of flowers. Midseason, flowering 3 weeks or more. 50c each.

**Silver Moon.** HW. White. Long creamy buds; nearly single, gigantic flowers in sprays. Extra vigor, growing 15

to 20 feet in one season. Perfect foliage. Midseason. Most satisfactory white Rose. Ranked second by American Rose Society. 50c each.

**Spanish Beauty.** Mme. Gregoire Staechelin. Cl. HP. Delicate Pink. Huge, long buds and big, fragrant flowers with wavy petals of apple-blossom pink. Strong grower simply covered with bloom. 50c each.



Paul's Scarlet Climber—Greatest Red Rose

Choose Your Own

ANY ROSES  
ON THIS PAGE

SPECIAL—50c each. Any 3 for \$1.25. Any 6 for \$2.25. Any 12 for \$3.95. Any 25 for \$7.95. Any 100 for \$27.50. Delivered



# HASTINGS' DIXIE ROSES

**ACCLIMATED ROSES**—On Hastings' Plantation we grow many thousands of Everblooming and Climbing Roses. All are budded on strong roots outdoors, are strong plants, two years old, and have been blooming profusely all summer long. They are of the finest garden varieties.

We recommend these strong plants for all sections of the United States where Roses can be grown, particularly for the South.

**ALL PRICES POSTPAID**—We will ship plants to you as late as it is safe to plant them. Set plants in their permanent places as soon as received from us so they may become well established before growing weather starts in spring. Shipments outside the United States, postage extra.

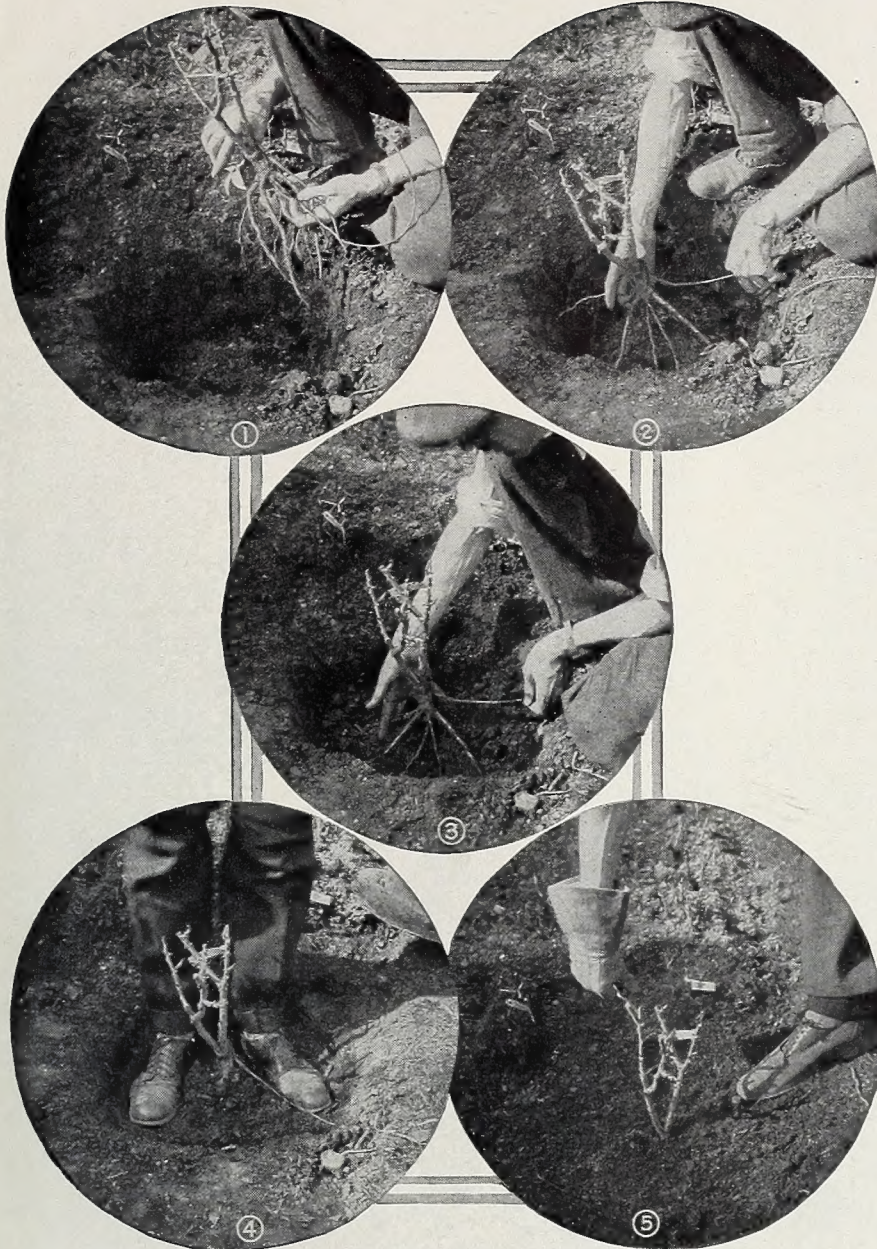
**WHEN TO PLANT**—December 1 to March 15 is the time to plant Roses. We can supply these fine plants until leaf-growth starts in the spring, about April 1, but better success is had with earlier planting. Fall or winter planting is by far more satisfactory.

**HOW TO PLANT**—Upon receipt of plants, open the bundle and place in a pail of water for a few hours. Don't expose to sun or wind. After removing from the water, trim off broken or damaged roots. *We do main pruning for you before shipment.* Soil should be well prepared before plants arrive. Spade a good garden soil 30 inches deep and thoroughly mix Sheep Manure and Feat Moss to 50 per cent of the upper 12 inches of soil. Plant in late afternoon or on a cloudy or rainy day if possible. Set Bush Roses 18 to 30 in. apart, except Hybrid Perpetuals, which need about 3 feet of space. Climbers need about 6 feet of space between plants.

Dig a hole large enough to spread the roots without crowding and deep enough to cover a little deeper than plants were in the nursery. *Budded Roses must be planted so the scar or swelling left by bud is beneath the surface.* In filling with soil, shake plant lightly, so soil gets all around the roots, then fill hole completely and firm soil so plant is set solid. Soak well with water. Further pruning back may be done before new leaf-growth starts in spring.

**CULTIVATION**—Cultivate frequently, about 1 in. deep, without disturbing the roots. Mulch entire beds with 2-in. layer of peat moss. This protects roots from sun, gives them air and conserves soil-moisture. When watering, soak the ground as deep as roots penetrate, about 18 in., and don't water again until surface is quite dry. Don't sprinkle. Spray regularly with Tri-ogen, the complete all-purpose rose spray.

All Tea (T), Hybrid Tea (HT) and Climbing Hybrid Tea (Cl. HT) Roses are so-called Everblooming Roses. Hybrid Perpetuals (HP) and Hybrid Wichuraiana Climbers (HW) are seasonal mass bloomers.



Use care in Rose-planting for best results

JOIN THE AMERICAN ROSE SOCIETY.

We will gladly send full information upon request

## Read Directions for Ordering Nursery Stock

NOTICE! We cannot accept orders for balled plants, either for express or freight shipment, for the duration.

**Terms Cash** Send remittance with your order by post-office or express money order, registered mail or bank draft. This insures attention and avoids delays. Absolutely no plants or other perishable goods will be sent C. O. D.

**Shipping Charges** We pay all transportation charges except on *Not Prepaid or F. O. B. or B. & B.* (balled and burlapped) plant items listed in this catalog. Such not-prepaid charges will be collected by transportation company upon delivery of plants. Shipments outside the United States, postage extra.

**Shipping Methods** Shipping directions should be plainly written on our order sheets—by mail, express or freight. When no directions are given, we ship according to our best judgment. Usually we advise express to get plants to you in best condition. Heavier shipments come slower but cheaper by freight, as a rule. Where we make a Delivered price, we ship prepaid by mail or express, or freight at our discretion.

We mail you a notice when your express or freight shipment is made so you may get it as soon as it arrives.

**Time of Shipment** Unless instructed otherwise, orders received during the shipping season will be sent as soon after order is received as possible. Orders booked in advance will be shipped as soon as possible after the shipping season opens.

**Shipping and Planting Season** Seeds are shipped whenever ordered unless we are instructed to ship at some later date. Fall planting bulbs are ready for shipment from about Sept. 1 to Jan. 1.

Shrubs, Roses, Trees and other plants grown in the open field are ready for shipment as soon as growth is checked in the fall about Nov. 15 to Dec. 1 and may be shipped until growth starts in the spring about March 25. Balled plants may be shipped at any time, though the colder season is best. Write for free seed and bulb catalog.

**About Warranty** H. G. Hastings Co. give no warranty, express or implied, as to the productiveness of seeds, plants or bulbs they send out, and will not be in any way responsible for the crop. If purchaser does not accept the goods on these terms, they are at once to be returned, and any money that may have been paid for them will be refunded. Our liability in all instances is limited to the purchase prices.

**Claims** We propose to furnish you with nursery stock according to your order, true to name, well rooted, well grown, properly packed and delivered to the forwarding companies in first-class condition. If, by any possibility, errors should occur, they will be promptly rectified if claim is made **within ten days** after receipt of goods. We are just as anxious as you are for our stocks to be absolutely satisfactory in every way. Your success is our success.

SEND ALL ORDERS DIRECT TO H. G. HASTINGS CO., ATLANTA, GA. WE HAVE ABSOLUTELY NO AGENTS

# HASTINGS' 1944 *Southern Sunshine*

**AARS** All-America **AARS**

## ROSE COLLECTION

"Three Yellow Roses," the finest yellows in the world. The new Mme. Chiang Kai-shek, tops All-America Rose Selection for 1944; Lowell Thomas, practically tying it and also All-America Rose Selection for 1944; and Eclipse, heretofore accepted as the finest of all yellow Roses.

Everybody loves yellow Roses. Now you can really have strong-growing, beautiful yellow garden Roses. Order promptly. These new 1944 Roses will quickly sell out.

All 3 for **\$4.45**  
Postpaid

3 of each **\$13.25**  
Postpaid

### LOWELL THOMAS. Patent 595

*Butter-Yellow.* Long-pointed buds; large, open, double flowers; moderate fragrance. Vigorous upright grower, healthy foliage, strong stems. 1944 A.A.R.S. winner—first time offered.

**\$2.00 each; 3 for \$5.40**

### ECLIPSE. Patent 172

*Golden Yellow.* Streamlined, slim tapering buds for bud vase, bouquet or boutonniere. Light fragrance. Vigorous, branching plants, healthy foliage, long stems, and abundant bloomer. Gold Medals by A.R.S., also in France and Italy.

**\$1.25 each; 3 for \$3.15; 12 for \$12.50**

### MME. CHIANG KAI-SHEK. Patent applied for

*Light Yellow.* Exquisite long-pointed buds, opening to large, fully double flowers of very light yellow. Vigorous, erect grower, healthy rich foliage, long stems and a good bloomer with moderate fragrance. Grand new yellow Rose—first time offered. 1944 A.A.R.S. top winner.

**\$2.00 each; 3 for \$5.40**



LOWELL THOMAS. \$2.00



© ECLIPSE. \$1.25

MME. CHIANG KAI-SHEK. \$2.00



**H. G. HASTINGS CO.**  
ATLANTA . GEORGIA